



The Switchlist

Official Publication of the Pacific Northwest Region, National Model Railroad Association

February 2019

Form 255
UNION PACIFIC RAILROAD COMPANY

SWITCH ENGINEMEN'S DAILY REGISTER

FOREMAN	No. of Helpers	ENGINEER AND FIREMAN	Compared Time	Job Worked	Highest Number	Left Round House or Hoist Track	SHIFT WORKED		Arrived Round House or Hoist Track	HOURS WORKED			Accomplished Miles	Explanation of Meal Period, Overtime, Delays, etc.
							Began Work	Quit Work		Meal Period	Straight Time	Over Time		

Illinois Central Gulf Switchlist

YRS15, Friday, February 7, 1982
 at: Reserve
 Time: 7:15 AM
 Tariff: 0
 Next Yard: St. Rose, LA
 Engine: Drew Maduro
 Origin: Reserve, LA
 No. 7-027
 Destination: St. Rose, LA
 UP 2701 Cabin: 193044

Form 818-A Standard—Small
 SWITCH CARS CAREFULLY AND SAFELY
 AVOID ROUGH HANDLING
 Santa Fe
 (Insert Name of Railway Company)
 SWITCH LIST

Train No. 350/P Engine No. 470/P Station 1-3-18 Time 6/P M.

CAR	Initials	No.	Contents	Destination	Consignee	Tonnage
1						
2		180	Williams Bros			
3		44	68262			
4		127	68758			
5						
6						
7						
8						
9						

Lewis 3.57

- ### In This Issue
- PNR News and Announcements:
 - ◆ The PNR Timetable
 - ◆ Kootenay Express 2019
 - ◆ 4th Annual Railway Modellers Meet of BC
 - ◆ In Memorium
 - ◆ Listing of New PNR Members
 - Features:
 - ◆ A Model Railroad is Never Done
 - ◆ Achievement Program Information—Golden Spike Award
 - Officer, Staff, and Division Reports
 - PNR Interchange
 - Timetable



KOOTENAY EXPRESS 2019

TRAIN NO. _____

Duplicate	AT	STATION	INITIAL	NUMBER	CONTENTS	FROM
1						
2						
3						
4						
5						
6						
7						

Handwritten notes on a grid background:

1st set 3600 lbs

Temp 70

2nd set

3rd set





The Switchlist

Editor:

Greg Kujawa

406.589.6256

Email: switchlist@pnr.nmra.org.

The Switchlist is the official publication of the Pacific Northwest Region, National Model Railroad Association and is published quarterly in February, May, August, and November.

SUBSCRIPTIONS

The Switchlist is available free of charge online at the PNR website, pnr.nmra.org. PNR members with current email addresses on file with the NMRA will receive an email notice when the latest issue is posted. To receive notice when the next *Switchlist* is posted (and other news of interest to PNR members), join our email list by sending a blank email to:

PNR-NMRA-subscribe@YahooGroups.com

CONTRIBUTIONS

Readers of *The Switchlist* are encouraged to submit news, articles, photos, and drawings about PNR activities past, present and future, and articles on other aspects of model railroading are also appreciated. If the work of others, is being included, please ensure you have their written permission and include attributions as appropriate. All contributions must be digital and preferably in file formats compatible with the Microsoft platform.

Photographs and illustrations are encouraged in all common digital formats. The Editor reserves the right to accept, reject, and edit contributions as space, time, and suitability of material dictate. *The Switchlist* does not pay for articles.

Please email your contributions to the editor at switchlist@pnr.nmra.org. Deadline for submissions is:

February 1

May 1

August 1

November 1

Letters to the editor and other editorial opinions are those of the author and do not necessarily reflect opinions and policy of the PNR or NMRA. Complete staff and contact information is available in this newsletter and on the PNR website: pnr.nmra.org.

ADVERTISING

Non-commercial classified advertising will be accepted from PNR members at no charge as a member service. Email submissions to the Editor. Hobby stores that support model railroading may also include an advertisement. See the section titled "PNR Interchange" for more details.

© 2019 Pacific Northwest Region, National Model Railroad Association. Permission to reprint is granted to all affiliates of the NMRA. Others may request permission to reprint from the Editor.

No Reason to Get Bored

As you'll discover in this edition of *The Switchlist*, there is a lot of model railroading action happening in the PNR over the next few months. Usually I end this Editor's blurb by pointing you to the Timetable section of the newsletter. But this time I'll start with that topic. The Timetable is more than two full pages in this edition, which is the highest number of scheduled events over the past three years, if not longer. If you know of an upcoming event that is not yet listed, PNR webmaster Mark Johnson provides guidance on p.3 on how to submit your event information.

Next in the newsletter, we get into the nitty gritty details of several specific events. Although not in calendar order, the major event for the PNR is our annual convention. [Kootenay Express 2019](#) is being hosted by the 6th Division and the planning is coming together really well. Beginning on p.3, Rob Badmington provides a rundown of the major activities and opportunities awaiting us in Cranbrook, British Columbia, May 29–June 2.

Next up, Marc Simpson of the 7th Division entices us to attend the 4th annual Railway Modellers Meet of BC, May 3–5, 2019, in Burnaby.

Still not enough to get you out of the house? That same weekend (Sunday, May 5), the 29th anniversary of Victoria's annual Model Railway Show is being held in Colwood (Victoria), BC. The poster on p.9 has all the logistical information needed to make your plans to attend.

Aside from these events and others listed in the Timetable are the many activities being sponsored by your PNR division, local clubs, and other organizations. Oh, and don't forget about the [2019 NMRA National Convention](#) being held in Salt Lake City. This national convention is in relatively close proximity to our region, so we hope you can take advantage of that and fit it into your summer schedule.

Shifting gears a bit ... please review the list of deceased PNR members on p.7 and take a moment to remember those folks and their families in your thoughts and prayers. Our new members also deserve our attention. As Jack Hamilton requests in his monthly electronic *Train Orders*, please reach out to welcome our new members listed on p.8. They have taken the courageous step to "test-fit" the NMRA, and so it is incumbent upon us to now personally connect with them. After all, fellowship and a shared sense of community is a major purpose and benefit of the NMRA.

The "Features" section of the newsletter includes an article by Bob Parish, MMR (and PNR VP), describing how and why a model railroad may never be done. The fun and challenges are continual. At least there is a lot of variety in the things we can (or must) keep up with.

The Golden Spike Award. What is it? If you've been curious about the Golden Spike Award and what it's all about, Jack Hamilton, MMR and Achievement Program Chair, provides insight into how easy it is to earn the award and how it can serve as an introduction to the Achievement Program.

Our Officers and Division Superintendents share their latest insights and updates in their quarterly reports, so please take a moment to review them.

Even though I already mentioned the Timetable (pp.20–22), I'll still close out on that topic by simply saying that we should have no excuse to be bored or overcome with "cabin fever" through the remainder of winter and into mud season. The tons of scheduled events are there to benefit us and our collective participation benefits them. And, while you're planning your attendance, be courageous and invite one of our new members along!

I hope to see you in Cranbrook or at least one of the other many model railroading events this year!

Greg Kujawa, Editor

PNR News and Announcements

The PNR Timetable

Mark Johnson, PNR Webmaster

The PNR web page at <http://pnr.nmra.org> features a list of Upcoming Events across the Region, especially the Regional Convention.

The web listing is used by Jack Hamilton for the "Station Stops" column in his excellent monthly *Train Orders* email (Thanks, Jack!). *The Switchlist*, several PNR Divisions, and local clubs include relevant posts from the list.

This means that you get a lot of exposure with a single notice!

I try to keep the list up to date by scanning several websites in the Region, but I may miss some. So please send me (timetable@pnr.nmra.org) a 4-5 line summary of your planned event, with dates, times, location, and description.

Thanks!

Kootenay Express 2019, PNR Regional Convention Cranbrook, BC, May 29–June 2, 2019

Rob Badmington, Publicity and Promotion Committee Chair

Photos by the author unless noted

Momentum is rapidly building for PNR's annual Convention to be held at the end of May in Cranbrook, British Columbia. New activities are being added to the program almost daily. Over 60 people have already pre-registered to participate, with almost every division of the PNR represented.

In this issue of *The Switchlist*, I will describe some of the highlights of the convention, including a few of the clinics, the prototype tours, the Banquet Speaker, and the socializing opportunities.

Clinics

Almost two dozen clinics are planned on a wide range of modeling and prototype subjects. Topics include working with wood kits, scratchbuilding signals, designing and building a diorama, a gentle introduction to Arduino programming, second lives of cabooses, prototype research, rail from mill to mainline, and much more. There will also be a hands-on **"Modeling with the Masters"** clinic giving attendees the opportunity to work with Master Model Railroader Fred Headon to build their own take-home project.

Prototype Tours

Two different prototype tours have been confirmed, and another one is tentatively in the works. The Cranbrook History Centre is right beside the Convention Hotel and your convention nametag will allow unlimited access to the museum and rail cars during the days of the convention.

For a behind the scenes look at the 28-car collection of passenger cars from the Golden Age of Travel, the **Down n' Dirty** tour is designed for those SERIOUS modellers who want to get down from the platforms and vestibules and focus on the details of the exterior of the cars. The museum has graciously given permission to get down in the dirt to record details of the cars with a camera, note pad, and tape measure. NOTE: The tour will require the physical agility necessary to get down and back up, and to crawl around under the cars, quite literally, in the dirt.

A different type of experience awaits those who take the tour of the Sullivan Mine and Powerhouse in nearby Kimberly. From its dis-



CPR FA2 4090 and FB2 4469 are on display just outside the Canadian Museum of Rail Travel in Cranbrook, along with the restored station from Elko, BC and the Cranbrook water tower.



The Kimberly Underground Mining Railway takes riders up the valley to the Sullivan Mine and Powerhouse.

covery in 1892 until it's closing in 1992, the Sullivan mine produced over \$20 billion worth of lead, zinc, and silver. Now, the underground railway has been restored as a tourist line to take riders up the valley to the mine and powerhouse, to learn about hard rock mining and some of the equipment, and see the giant compressors and generators that ran the mine.

We are hoping a third prototype tour can be arranged to visit to one of the five open pit coal mines operated by Teck Resources near Sparwood, BC. Each of these mines produces steel-making coal that is shipped by Canadian Pacific to the West Coast for export to Asia. All of the mines have a loop track and flood loader to fill unit trains of 125+ cars in less than 6 hours.



Banquet Guest Speaker Jim Cullen at the throttle of Number 19 at Champion Park, AB. *Jim Cullen photo*

Banquet and Other Socializing

The Banquet on Saturday evening will be a fun filled event with great food, awards presentations, and socializing, and will be capped off with a fascinating talk by Jim Cullen. Jim's life-long passion for trains has led him to a career in rail preservation and museums. He served as a director at the California State Railroad Museum Foundation in Sacramento, and has volunteered with many railway museums in the region including leadership, operating and collections roles at Heritage Park Historical Village, Champion Park, and the Canadian Museum of Rail Travel. His presentation will focus on the lighter side of railway preservation and will feature some memorable personalities, railway museum misadventures in Canada and the US, and what the future holds for railway preservation.

One of the best things about attending a model railroad convention is the opportunity to meet friends, old and new. The Convention kicks off on Wednesday, May 29, with the popular Ice Cream Social. A very active **Non-Rail program** is planned, with a Movie night on Thursday evening and Bingo night Friday evening, along with the usual crafts, puzzles, and cards. A special "High Tea" is planned for Friday afternoon.

Other Information

If you have never been to Cranbrook, you will find a modern city of over 20,000 people, nestled in a wide valley between the Rockies and Purcell Mountain Ranges. There is definitely something for everyone, ranging from museums, golf, outdoor recreation, and sightseeing. For a taste of what awaits you, please visit <http://cranbrook.ca/visitors/>. A reminder to our American members, your US dollar goes a lot farther in Canada. At current exchange rates, your money is worth 30% more.

Whether you pre-register or sign up at the convention, please make sure you arrive early. Activities start Wednesday mid-afternoon with the PNR BOD meeting, followed by the Ice Cream Social. The registration desk will open Wednesday morning. All the latest details on the Convention are posted on the website: <https://www.kootenayexpress2019.ca/>. It is the Convention Committee's goal to offer you more activities than you can fit into your schedule. But whatever you choose to do, please make sure you leave some time to renew acquaintances and make some new friends. After all, isn't that what it's all about?

Annual Railway Modellers Meet of BC, May 3-5, 2019

Marc Simpson, 7th Division
Photos by the author unless noted

Registration for the 4th Annual Railway Modellers Meet of BC is Open!

The long wait is over; registration for the 4th annual Railway Modellers Meet of British Columbia (RMMBC) is now open! Operating sessions, clinics, layout tours, model displays, and more are on the schedule this year. There are also a few new additions to this year's schedule that you won't want to miss.

Keynote Address — Lance Mindheim

The 2019 RMMBC Keynote Address will be presented by well-known author and layout designer Lance Mindheim. Lance models urban industrial switching railroads and presently has three layouts. The "main" layout is based on CSX's Downtown Spur in Miami. He also has two smaller layouts, one based on the Los



Lance Mindheim photos



Angeles Junction and the other a proto free lance version of the Bush Terminal in Brooklyn. He writes frequently for the hobby press and is the owner of The Shelf Layouts Company, Inc., a custom layout building and design firm. Lance lives in Silver Spring, Maryland, and has one grown son, Zachary, who often accompanies him to model railroading events.

In addition, Lance will also be presenting several additional clinics, so you'll have more opportunities to hear Lance as well. Don't miss this opportunity to see and hear one of the thought leaders of model railroading today.

Geoff Bunza — Working with Arduinos Workshop

Dr. Geoff Bunza will be presenting a hands-on workshop on how to use Arduinos and their applications in model railroading. This work shop will feature a special "Make and Take with the Masters" showing modelers how to combine small Arduino controllers, LEDs, Servos, and other items to create



Geoff Bunza photos



many different working features for your layout. This hands-on work shop will have very limited spaces available, so register early to ensure your spot in this very informative work shop. There is an extra cost for the work shop to cover the cost of the parts you will be using (Arduino Mega2560, a USB setup, a 9G servo motor, and an assortment of LEDs and jumpers), and you will get to take home the result of your handiwork in the workshop. All you need to bring is your laptop and a USB drive. **NOTE: This workshop is currently filled and there is a waiting list.**

Dr. Bunza is a well-known modeller who has written numerous articles on scale animation and lighting effects in the hobby press. He received a Mantua train set for Christmas at age 6 which got him started in the hobby. Scale model animation in HO is one of his great interests. Dr. Bunza primarily models the New York Central, the Great Northern Railway, along with Maine narrow gauge in HO_n30. Dr. Bunza received his Doctorate from MIT along with three other degrees in electrical engineering. He is blessed with his wife, Lin, in marriage for 40 years and their two terrific sons. He is a life member of the NMRA and holds an Extra Class amateur radio license.

Clinics

This year we'll have a full selection of clinics running in three theater style presentation rooms. These facilities promise excellent sightlines in a comfortable university classroom facility setting. This year's planned clinics include presentations on electronics, 3D printing, modelling techniques, prototype and model railway operations, and much more. Visit the Clinics page on the [RMMBC website](#) to see the developing variety of clinics on offer at this year's meet.

Operating Sessions

The ever popular operating sessions are returning for 2019, with sessions on both Friday afternoon and Saturday evening planned on a number of top tier local model railways. Register early as these operating spots fill up quickly.



Layout Tours

This year the layout tour will visit layouts in the Surrey and Langley areas. The [RMMBC website](#) will have more details on the layouts on this year's tour once the details on each layout are available. Check back often to see all the layouts on this always-popular tour.



Display Room

This is a popular part of the meet, not least for its ability to bring us together, put names to faces, and inspire creativity in the hobby. It is meant to be wide open to any of the many ways we like to enjoy this fabulous hobby. You don't need to be a craftsman or even a builder to participate. We welcome all levels of hobby fun.

Photos in and of themselves are welcome. This year we will provide a way to display them safely and prominently. Bring your models (finished or in progress), bring locomotives, structures, freight cars, dioramas, vehicles or other models. Or bring a display of unusual tools and techniques. Show us a circuit you are using or some other new bit of tech. If you are doing research, bring that too.

Basically, if it's part of the hobby, we're interested to see what you are working on. Bring it to display and spend some time chatting about it with the rest of us. We love to see the "why and how" of your project too. If you have project or prototype photos, bring them along. Help us to understand why you built it and what makes it interesting.

All scales, gauges, and eras are welcome. Spend some time during the meet in the display room viewing the displays, learning what other others are doing, and maybe find inspiration for your next project.

We are also working on some new ideas for the "Meet the Modeller" portion of the Display Room. We'll have more details on this once the specifics are sorted out. Stay tuned!

On Site Accommodations and Dining

As in previous years, there will be inexpensive, comfortable on-site accommodations available for RMMBC attendees. Simon Fraser University (SFU) has a wide range of room types available at very reasonable prices. The rooms are a short walk from all the on-site meet activities, so take advantage of this option, both for out-of-town registrants as well as those from the local area who might prefer to stay on-site during the Railway Modellers Meet. As well, the SFU Campus offers a wide range of dining options, so you won't have to venture far from the meet.

There are more reasons than ever to register for the Railway Modellers Meet at Simon Fraser University's Burnaby Campus from May 3rd to May 5th, 2019. www.railwaymodellersmeetofbc.ca has all the details.



Railway Modellers
MEET OF BRITISH COLUMBIA

4TH ANNUAL
7TH DIVISION PNR MODELLERS
MEET

www.railwaymodellersmeetofbc.ca

May 3rd to May 5th, 2019

Location
Simon Fraser University (Burnaby Campus)
West Mall Centre

FEATURING
Lance Mindheim Keynote Address and Clinics
Operating Sessions featuring NEW layouts
Layout Tours featuring NEW Layouts
Railway Model and Prototype Clinics
Model Railway Displays
- And much more!

In Memoriam

This section is dedicated to the remembrance of those members of the NMRA Pacific Northwest Region whom we have lost over the past year. We extend our deepest sympathies, thoughts, and prayers to their families and friends. We will sincerely miss the fellowship of these folks and all their contributions to the NMRA and hobby.

Deceased Members of the PNR — January 2018 through January 2019

January 2018	Div 7	Robert J. Gardner	Salmon Arm, BC	MMR
February 2018	Div 1	John M. Luther	Eugene, OR	
	Div 6	Gordon Lindquist	Calgary, AB	Life Member
		Edward L. Bishton	Okotoks, AB	Life Member
	Div 7	Ken Owens	Ashcroft, BC	Life Member
March 2018	None			
April 2018	Div 4	David E. Meyer	Tacoma, WA	
	Div 7	Colin H. Yeulet	Rossland, BC	
May 2018	Div 4	Lathon Sanford	Kent, WA	
June 2018	Div 2	Gerald Howard	Portland, OR	
July 2018	Div 4	Glenn R. Walls	Poulsbo, WA	
August 2018	None			
September 2018	None			
October 2018	Div 4	William C. Baker	Port Orchard, WA	
November 2018	Div 5	Don McGilvray	Spokane Valley, WA	Life Member
	Div 6	John F. Slimmon	St Albert, AB	
December 2018	None			
January 2019	Div 1	Donald R. Coble	Oakland, OR	Life Member
	Div 4	Roger J. Miener	Tacoma, WA	Life Member
	Div 4	Stewart Sterling	Anchorage, AK	

Have you changed your address or other membership information?

Notify NMRA Headquarters

email: nmrahq@aol.com

Phone: 423-892-2846 (8 a.m.–4 p.m. ET)

Mail: P.O. Box 1328, Soddy Daisy TN 37384-1328



NMRA Video Library

Did you know ... the NMRA Video Library has over 150 videos of clinics that were presented at National Conventions from the last 30 years. Virtually every model railroading topic you can think of has been covered ... from scenery to operations to prototypes to electronics. If you missed the last few decades of National Conventions, you can still see some of the best clinics around.

Just log into www.nmra.org as a member, click on “Member / Member Home” and click on the big red box that says “Watch Clinic Videos” next to the photo ...it’s that easy!

New PNR Members

November 2018–January 2019

We extend a warm welcome to all new members of the Pacific Northwest Region, NMRA. Those listed below have joined the PNR over the past quarter. If you do not see your name listed, please be patient. Your membership is likely still being processed.

We are especially happy to welcome our new Rail Pass members ([identified in blue text](#)). We recognize that you are with us on a trial basis and we will have to work hard to convince you to stay with us. Please make sure to contact your Division Superintendent promptly (listing at the end of this newsletter) so you can be included in all Division activities.

Current Members: Please review this list for anyone living near you and consider initiating a connection with them through your Division Superintendent.

Div	Last Name	First Name	City/Town	State/Province
01	Lawler	Tom	La Pine	OR
01	McBride	Melody	Coos Bay	OR
01	Olson	Dave	Roseburg	OR
01	Stackpole	Jon	Bend	OR
02	Duray	Andy	Beaverton	OR
02	Johnston	Gerald	Portland	OR
02	Krysh	James	Independence	OR
02	Miller	Leah	Vancouver	WA
02	Rippeteau	Steve	Woodburn	OR
03	Blewett	William	Meridian	ID
03	Cathel	Jeff	Deer Lodge	MT
04	Bentz	Family	Edmonds	WA
04	Bogues	Lukas	Poulsbo	WA
04	Himmerick	Isabelle	Bremerton	WA
04	Hoxit	Camden	Olympia	WA
04	Jaffer	Zubeir	Renton	WA
04	Nore	Keith	North Pole	AK
04	Palm	Doug	Camano Island	WA
04	Pitts	John	Burlington	WA

Div	Last Name	First Name	City/Town	State/Province
04	Watkins	Joy	Camano Island	WA
05	Miller	Cari	Lewiston	ID
05	Rozen	Lee	Moscow	ID
05	Smith	Gordon	Richland	WA
05	Stevens	David	Irrigon	OR
05	Stirling	William	Missoula	MT
06	Johnson	Cindy	Regina	SK
06	Millar	Strling	Regina	SK
06	Zboya	Kurtis	Calgary	AB
07	Caswell	Chris	Nanaimo	BC
07	Ennik	Jurrien	Prince George	BC
07	Flood	Chris	Campbell River	BC
07	Franko	Robert	Montrose	BC
07	Green	Wayne	Prince George	BC
07	Haggert	Bob	Ladner	BC
07	McLaren	Zac	Kitchener	BC
07	Merlo	Eric	Trail	BC
07	Stephenson	Michael	Roberts Creek	BC
07	Wright	Ron	North Saanich	BC

Save the Date! May 29–June 2, 2019

**PNR Convention -- Kootenay Express 2019
(hosted by 6th Division)**

**Prestige Rocky Mountain Resort
Cranbrook, British Columbia**

Website: <https://www.kootenayexpress2019.ca/>

29TH ANNIVERSARY - VICTORIA'S ANNUAL

Model Railway Show

2019

Sunday, May 5th
10 am - 4 pm

West Shore - Curling Rink at
Juan de Fuca Recreation Centre
1767 Island Highway, Colwood

Free Parking • BC Transit Bus Route #50

Hourly Door Prizes!

Operating Model Railroads • Lego & Brio
Commercial & Individual Sales & Displays

For More Information:
Ted Alexis ph: (250) 595-4070

Admissions

Adults	\$7
Family	\$15
NMRA/PNR Members	\$6
Youth	\$6

Children (8 and under) FREE
when accompanied by an adult

Supporters of C-Fax Santa's
Anonymous, the Times Colonist
Christmas Fund.



Supported By The 7th Division PNR

Layout by Robert Hopkins | Photo by Dan Rowsell

Features

A Model Railroad is Never Done

Article and Photos by Bob Parrish, MMR

It has been said that a model railroad is never done. That is very true. There is ongoing maintenance to the prototype railroads and so it is with ours.

Allow me to share a recent experience that points this up. I was on the tour for the fall meet of the 3rd Division. Most regulars and visitors see my railroad as done. No Plywood Central for me!!! It is all landscaped and upholstered. There are skirts around the benchwork and fabric valances to hide the lighting.

On this occasion, after a few minutes of powering up the railroad, a strong smell of frying electrical something wafted its way throughout the room. Everything still worked, however. No shorts and the DCC system talked normally to the various locomotives. After about a half hour, the smell drifted away. Hmmmm.

Recall my story in this publication, November 2016, where I explained that electrical smoke is infinitely compressible, and the amount of smoke and stink has nothing to do with the size of the smoking (smoked) component.

A day later, I found a turnout in the trolley division to not be functioning in one direction. I use twin coil switch machines with momentary, center-off controls. A look under the benchwork proved that one coil had been fried and actually scorched the underside of the benchwork. It got pretty toasty! I have a crude power supply for turnouts that I can probably arc weld with. During the demise of the switch machine, all other turnouts continued to function normally. I guess that says something for how much that supply can throw. Maybe I should put some fuses in series to the bus wires!

As it turns out, the control switch had failed and was powering one coil permanently. All is now repaired and life on the railroad is good and goes on again.

Beyond maintenance, there is something that always calls for attention: a figure laying down on the job after an operations session, a new find at the hobby store of a vehicle that needs to be placed somewhere cool, or a new freight car that has finally cleared your workbench. There is always something out there to do.

Over this last Thanksgiving weekend, I decided to tear out my narrow gauge division. I was never able to make my electronic switching system play with the idea of team tracks and transfers of commodities between the gauges. I expanded the Nampa yard to include some of the city of Nampa and some additional sidings for deliveries. Previously, my operators were simply dumping the cars in the yard for imaginary pickup by the consignees.

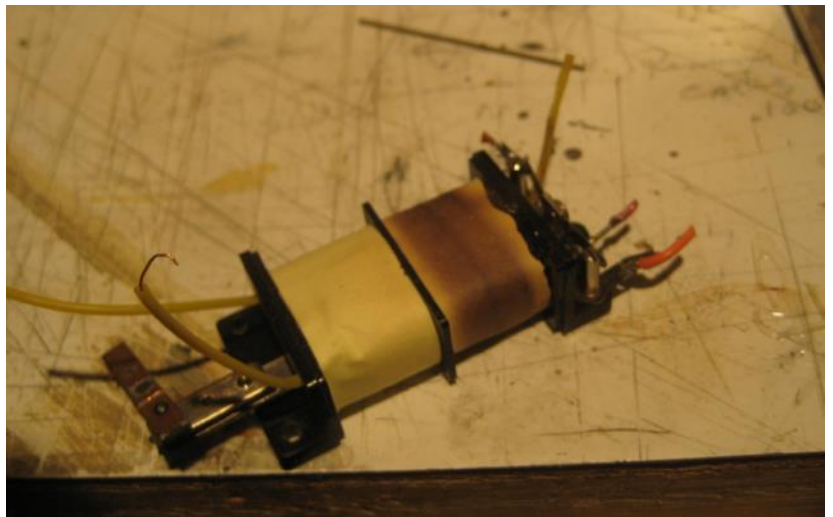
The tear-out and expansion turned out to be a monumental example of “mission creep.” With those changes came all new control panels on that side of the room, modification of the Nampa yard and the interchange tracks, and an invention of my own for a car-card forwarding system.

In an e-mail conversation with Tony Koester, he admonished me to not invent yet another card system and provided an option. But by then, I was too far into it.

I took ideas for card systems from various magazine articles all the way back to 1960 and combined them into a process that now has my operators acting as a conductor in addition to simply driving trains and shuffling cars around the pike.

So far, our weekly operations group has not dropped anything heavy on my foot and seems to be learning their way into it. They most recently paired up (without my prompting) as engineer/conductor teams and the three-train schedule worked out pretty well. So far, I have not sprung on them a fast clock or the call for empties cards that the prototype uses.

The expansion of Nampa created opportunities for several new sidings and modeling options for the actual industries. The streets are Plastruct brick sheet with 1/16” square styrene for the curbing. Construction of all of this went relatively quickly because I had the structures, vehicles, and people done and ready for placement in the new scenes.



Fried twin coil switch machine.



Views of Nampa, Idaho, on Bob Parrish's layout.

To conclude then, a model railroad is never done. We are artisans of a world that most other people will never understand. Our railroads are works of art that can be changed, remade, and repaired into the worlds that we envision and are in charge of—our own “world as we would like it.”

What needs updating or changing on your pike? What have you considered for your railroad but have not taken the energy to change? Take a walk around your railroad room with the eyes of a visitor and see what comes to you. You might tell yourself something that you had not heard before.

This really is the greatest hobby.

Achievement Program Information—Golden Spike Award

Jack Hamilton, MMR, AP Chair

One common denominator for virtually all NMRA members is a universal lack of correct understanding of the Achievement Program and how it works. We all tend to listen to “old wives’ tales” and then read too much into the “requirements.” Over the next short while, I would like to dispel some of the incorrect information with the intent of trying to get more of you to participate.

Let’s talk about the Golden Spike Award.

While the Golden Spike (GS) Award is not a formal Achievement Program “certificate,” it is an easy way to begin in the

program and gain some understanding of how the AP works. A GS award application can be “witnessed” (not judged) by any NMRA member in good standing. Only one witness is required. The GS can be based on a single layout, section of a layout, a single module, or several modules...whatever it takes to satisfy the requirements.

Here is what you need to demonstrate:

- Display six units of rolling stock either scratchbuilt, craftsman kits, or super-detailed commercial kits. Any combination thereof, works. For example, ‘blue box’ kits with super detailing (more than the kit offers) work well. Additional parts, different painting, and/or weathering work for the GS.
- Construct a minimum of eight square feet of layout including scenery. That is comparable to a standard 2’x4’ module and it does not call for museum quality.
- Construct five structures either scratchbuilt, craftsman kits, or superdetailed commercial kits. If a module has less than five structures, additional structures separate from the scene may be presented. Once again, kits like Woodland Scenics DPM® and Walthers Cornerstone® (or others) fit the bill.
- Three types of trackage required (e.g. turnout, crossing, crossover, etc.). All must be properly ballasted and installed on proper roadbed. Commercial trackage may be used.
- All installed trackage must be properly wired so that two trains can be operated simultaneously (e.g. double track main, single track main with sidings, and block or command control). Before you ask – if you are “dead rail,” you do not need to wire the tracks.
- Provide one additional electrical feature such as power-operated turnouts, signaling, turnout indication, lighted buildings, etc. This one is not all that difficult. A lighted structure using battery power is acceptable.

Those are really minimal requirements for a module or layout on which you are actually running trains. Presenting your work also allows an evaluator to talk to you about how you are doing and what you might wish to concentrate on for an AP certificate.

The real bottom line is that you have probably already done the work to earn the Golden Spike Award, so why not finish the process and have the certificate of recognition of your work to hang on the wall in the train room or crew lounge?

More later and always open for questions.

Jack

Officers’ Reports

From the Engineer Side of the Cab

Kurt Laidlaw, President

There are many ways to fulfill the non-profit purpose of the NMRA of advancing the hobby of scale model railroading wherever and whenever possible. The 4th Division has a unique project to share the hobby and to learn from others at the same time.

A little over a year ago, the Lutheran Retirement Center in Tacoma, Washington, reached out to local members for assistance. They had been given some model railroading equipment, but they had no idea what to do with it. Upon looking at what they had, it became apparent they had some junk that was not going to be usable. At that time, serendipity took over. A model railroader in Issaquah, Washington, offered the Division a small HO layout based in the Southwest. Instead of telling the Lutheran Retirement Center there was no hope for their dreams of a model railroad for the residents, the 4th Division brought the donated layout and set it up at the center. Thus began a project that demonstrates how to share the hobby with an unlikely group of citizens.

Two members of Tacoma clinic volunteered to take on the project. Warren Kerr, who has been leading the project, was a new NMRA member with little model railroading experience. He wanted to participate to learn how to do basic things like laying track, basic wiring, ballasting and scenery. He has gotten more than he bargained for. Not only does he work on the layout and run trains, he does all the coordination with the retirement center, organizes work parties, reports on the project at monthly clinics, and keeps a record of all the hours spent working on the project (AP program). Mitch Schoonejans is also a new member with an interest in European models. Mitch is the chief maintenance-of-way engineer on the project when he is not out at sea. The Division has been very supportive. They have donated track, cork, structures, and whatever else Warren asks for. The Puget Sound Model Railroad Engineers (PSMRE) have donated three boxes of structures. The owner of Tacoma’s only remaining brick and mortar train store—Rob’s Trains—has also helped out.

The residents named their railroad the Tacoma Lutheran Express. They have a dedicated group of enthusiasts who look forward to their monthly meeting with the nice men who run trains. One resident, who suffers from Parkinson’s disease,

comes in and paints for 15 minutes at a time. A couple of residents have built structures. The group decides where structures should be set up. During the monthly meeting, they ask lots of questions about trains and reminisce about trains they rode as children or the model train they had as a child. They are a wealth of information about local train operations. At the same time, the questions they ask keep Warren and Mitch on their toes. When Mitch brings European locomotives to run, there are lots of memories of trips to Europe over the years. Sometimes their family members show up and learn things about their parents they never knew because memories have been reawakened by watching a model train go around in a circle. We have one young boy who wants to come see his grandma, but spends lots of time looking at the train layout (recruitment!).

One unexpected benefit of the project has been a clinic presentation on maintenance-of-way operations on the Great Northern, Burlington Northern, and BNSF over a span of 40 years. A couple of months ago, we had a new participant at a meeting. It turned out he was in rehabilitation for knee surgery. He loved talking about his time working on the railroad and provided some great insights into what it takes to keep a railroad operating. He was willing to come to a clinic and spend a couple hours talking to the Tacoma members.

I thoroughly believe this type of opportunity exists across the Region. Every major city and many smaller towns have retirement centers with people who need contact with the outside world. Some have ex-model railroaders who can no longer operate their own layouts. They all have people with unique stories of adventures on trains and around trains. Therefore, I am throwing out a challenge to all the divisions. Go out and find a special project, whether it is at a retirement center, a school, a Boys and Girls Club, the Y or some other place. You never know what surprises await you and how much joy you can bring to others. Train shows are one thing, but an ongoing project provides constant reinforcement to the joys of model railroading. If you come up with a successful project, I hope you will share it with all of us. Good luck and happy modeling.

From the Fireman Side of the Cab

Bob Parrish, MMR, Vice President

We are into 2019 and another year of modeling ahead of us. In my message to you all in the last edition of the *Switchlist*, I spoke of the duties of the vice president as ensuring that the president doesn't die off on us and membership retention.

So far I'm doing my best on the first part, so I will move on to membership issues and ideas. Kurt and I agreed that he would take the lead on the front end with new members and I would try and plug up the back door.

With that, I would like to share a few thoughts. None of us should ever lose sight of the fact that this is a hobby. Jack Hamilton tells any who will hold still for a moment, "If you're not having fun, you're not doing it right".

Over the years, this hobby has seen the price of most everything go up and, to a new person, those costs starting out can be daunting. To spare hobby dollars for the NMRA is a commitment to the hobby. As an organization, we are over 80 years in service and can look back at a long list of people who volunteered their time and shared their hobby dollars. To all of those, then and now, thank you.

We have a regional gathering in late May and a national convention in the west that is of particular historical interest. The transcontinental railroad was completed 150 years ago on May 10th at Promontory Point, Utah. The convention is to be held in Salt Lake City and promises to be a gathering for wide modeling interests. These gatherings are never inexpensive and many of you may need to choose one or the other to attend. Allow me to make the pitch that you participate in at least one of them. Your attendance is yet another commitment to the hobby. Both events are listed in various places on the Internet, both regionally and nationally.

By the time this is posted and published, I will have contacted the various Division bosses with some ideas as to how to engage new members in their divisions and especially to those who may be riding in on a Rail Pass. Recall that this abbreviated membership is the gateway mechanism we use to give new people a glimpse of what we are about here, and with that we probably only get one try at them for continuing their membership.

New members are listed in various ways in regional and division publications and I encourage you to invite them to local events and make them a part of your regular small gatherings such as operations sessions. Clubs with populations of NMRA members have a particular opportunity for engaging new people to the hobby.

It takes all of us to make this hobby special and on-going.

See ya.

2016 Treasurer's Report

Dave Liesse

No report this quarter. Some information from the 2018 Treasurer's Report is posted on the PNR website in the [Minutes, Reports and Motions from the PNR Board of Directors Meeting, June 2018](#).

Office Manager's Report

Ed Liesse

This report to the Members of the Pacific Northwest Region, NMRA, covers the months of December 2018 through January 2019. We also provide a snapshot of the overall membership trend since 2011. More on that later. You can see what's happening with the membership of the Region by looking at the figures in Tables 1 through 4 below. Our membership slowly improved over the last year, but dropped a little in June and July before building back up through December. A little drop in January seemed unusual, since the train shows are normally times for adding new members.

We did, however, bring in 197 new members during this period, of which 46 were Rail Passes and several were Family members and Student members. Unfortunately, we did lose eighteen active members to death during this period.

Table 1. Membership showing Rail Pass (RP) portion by Division

Div	Dec-17	Jan-18	Feb-18	Mar-18	Apr-18	May-18	Jun-18	Jul-18	Aug-18	Sep-18	Oct-18	Nov-18	Dec-18	Jan-19	Net +/- over year Dec- Jan
	Mem RP	Mem RP	Mem RP	Mem RP	Mem RP	Mem RP	Mem RP	Mem RP	Mem RP	Mem RP	Mem RP	Mem RP	Mem RP	Mem RP	
1	102 2	105 1	103 0	106 2	106 2	105 3	105 3	103 3	104 4	105 4	106 4	108 5	107 5	106 6	4
2	142 2	148 3	152 1	153 2	151 5	154 5	158 5	156 5	154 5	150 5	151 5	151 6	149 5	151 5	9
3	71 6	72 6	73 0	75 5	76 4	75 4	71 1	71 1	71 0	72 0	73 0	74 0	75 0	76 0	5
4	507 6	515 7	517 2	515 9	512 11	514 12	506 13	502 12	504 11	503 10	502 9	503 10	495 8	490 9	-17
5	190 4	188 4	189 1	195 4	191 2	195 4	196 4	195 3	193 3	191 2	191 2	186 2	186 2	190 3	0
6	212 0	211 0	208 0	220 0	227 0	225 1	233 1	232 0	235 1	251 1	257 1	259 1	257 0	254 0	42
7	331 17	332 15	335 1	335 14	336 12	333 8	328 6	329 1	335 5	336 5	338 7	339 8	333 8	327 0	-4
Tot	1555 37	1571 36	1577 5	1599 36	1599 36	1601 37	1597 33	1588 25	1596 29	1608 27	1618 28	1620 32	1602 28	1594 23	39

Table 2. New members showing Rail Pass portion by Division

Div	Dec-17	Jan-18	Feb-18	Mar-18	Apr-18	May-18	Jun-18	Jul-18	Aug-18	Sep-18	Oct-18	Nov-18	Dec-18	Jan-19	Total
	Mem RP	Mem RP	Mem RP	Mem RP	Mem RP	Mem RP	Mem RP	Mem RP	Mem RP	Mem RP	Mem RP	Mem RP	Mem RP	Mem RP	Mem RP
1	0 0	2 0	2 0	2 0	1 0	1 1	1 1	1 0	1 1	0 0	1 0	2 1	0 0	2 2	16 6
2	1 0	3 1	2 0	1 0	3 3	0 0	1 0	0 0	0 0	1 0	2 0	1 1	0 0	4 1	19 6
3	0 0	0 0	0 0	0 0	0 0	1 1	0 0	0 0	0 0	0 0	0 0	1 0	1 0	0 0	3 1
4	6 3	6 2	4 0	2 2	2 0	7 1	2 1	0 0	3 1	0 0	1 0	4 2	1 0	4 1	42 13
5	1 0	1 1	3 0	4 0	1 0	3 2	1 0	0 0	0 0	0 0	1 0	1 0	1 0	3 2	20 5
6	0 0	0 0	4 0	8 0	6 0	5 1	8 0	0 0	2 0	14 0	7 0	3 0	0 0	0 0	57 1
7	11 2	4 1	2 0	1 0	1 0	3 3	2 0	0 0	2 0	1 0	3 2	6 3	4 3	0 0	40 14
Tot	19 5	16 5	17 0	18 2	14 3	20 9	15 2	1 0	8 2	16 0	15 2	18 7	7 3	13 6	197 46

We also have a large number of Inactive members within the Region. We need to look through these lists of Inactive members and see what we can do to re-energize them to return to the hobby and re-activate their membership. Admittedly, there might be a number of these members who have passed away and we never received notification of their death. However, there are many who could be potential "Re-rails" if we would take the time to contact them and maybe find out why they didn't renew their membership. We might learn some new things we could be doing that would help in retaining new (and old) members.

Remember, **Membership retention is the job of every member!**

Much of this report (Table 1 through Table 4) centers on the relationship when individuals come on board as a new member and the time they go on the 30-60-day Past Due Reports. Look at the tables to see how your division is performing.

As mentioned earlier, this quarterly report also includes a look at the broader trend in membership. Figure 1 shows the trend in total PNR membership from 2011 through 2018. As you can see, membership was slowly declining during the first half of the period, but then jumped in 2015. This is likely a result of the national convention being held in Portland that year. Figure 2, which illustrates the trend in new memberships by division by year, appears to substantiate this. It shows a major spike in new members in Division 2 in 2015.

Table 3. Members 30-days Past Due showing Rail Pass portion by Division

Div	Dec-17		Jan-18		Feb-18		Mar-18		Apr-18		May-18		Jun-18		Jul-18		Aug-18		Sep-18		Oct-18		Nov-18		Dec-18		Jan-19	
	Mem	RP	Mem	RP	Mem	RP	Mem	RP	Mem	RP	Mem	RP	Mem	RP	Mem	RP	Mem	RP	Mem	RP	MEM	RP	Mem	RP	Mem	RP	Mem	RP
1	0	0	0	0	0	0	1	0	1	0	4	0	0	0	2	0	0	0	1	0	1	0	0	0	1	0	2	0
2	1	0	0	0	0	0	4	1	3	0	3	0	1	0	3	0	1	0	4	0	3	0	1	0	2	0	3	1
3	3	2	1	0	1	0	0	0	0	0	2	1	6	3	3	0	0	0	0	0	1	0	0	0	1	0	0	0
4	7	1	6	1	6	1	7	0	8	0	10	0	10	0	6	1	7	2	4	1	4	1	4	0	10	1	10	0
5	6	6	4	1	3	1	2	0	6	2	2	0	2	0	2	1	2	0	2	1	2	0	2	0	1	0	0	0
6	4	2	4	0	1	0	3	0	3	0	7	0	6	0	2	0	0	0	3	0	2	0	2	0	2	1	3	0
7	4	0	5	1	5	1	7	0	1	0	11	4	8	0	2	1	0	0	0	0	3	0	5	1	13	3	6	0
Tot	25	11	20	3	16	3	24	1	22	2	39	5	33	3	20	3	10	2	14	2	16	1	14	1	30	5	24	1

Table 4. Members 60-days Past Due showing Rail Pass portion by Division

Div	Dec-17		Jan-18		Feb-18		Mar-18		Apr-18		May-18		Jun-18		Jul-18		Aug-18		Sep-18		Oct-18		Nov-18		Dec-18		Jan-19	
	Mem	RP	Me	RP	Mem	RP	Mem	RP	Mem	RP	Mem	RP	Mem	RP	Mem	RP	Mem	RP	Mem	RP	Mem	RP	Mem	RP	Mem	RP	Mem	RP
1	0	0	0	0	0	0	2	0	1	0	1	0	4	0	0	0	2	0	0	0	1	0	1	0	0	0	1	0
2	0	0	0	0	0	0	2	0	4	1	2	0	1	0	1	0	3	0	1	0	3	0	3	0	1	0	1	0
3	4	0	2	1	1	0	0	0	0	0	0	0	1	1	6	3	3	0	0	0	1	0	1	0	0	0	0	0
4	7	2	5	1	6	1	4	0	5	0	7	0	8	0	10	0	6	1	7	2	4	1	4	1	3	0	10	1
5	2	0	6	6	3	1	2	0	2	0	4	2	2	0	1	0	2	1	2	0	2	0	2	0	2	0	2	0
6	5	0	3	2	1	0	0	0	2	0	3	0	7	0	6	0	2	0	0	0	2	0	2	0	2	0	2	1
7	7	0	2	0	5	1	1	0	6	1	0	0	10	3	9	0	2	1	0	0	3	0	3	0	3	0	13	3
Tot	25	2	18	10	16	3	11	0	20	2	17	2	33	4	33	3	20	3	10	2	16	1	16	1	11	0	28	5

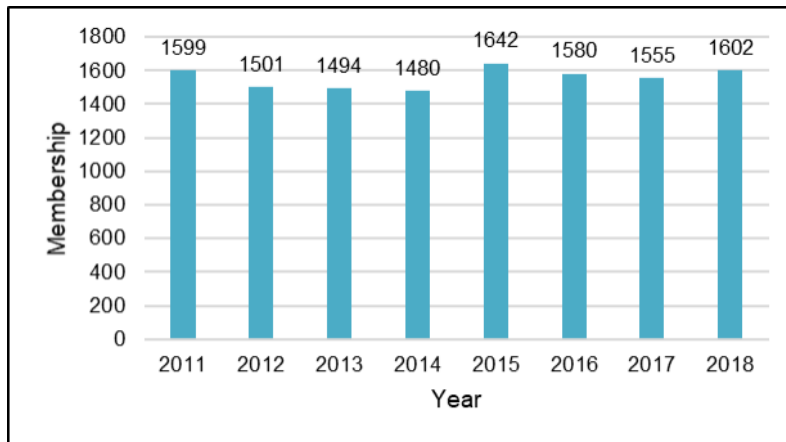


Fig. 1. Total PNR Membership (all categories) for the period 2011-2018.

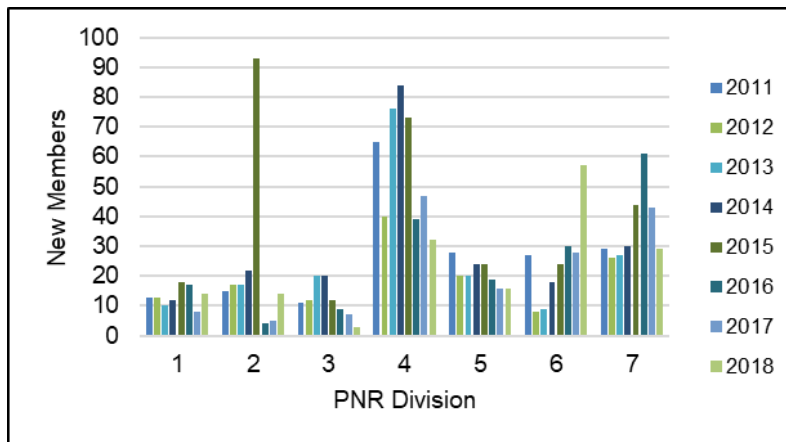


Fig. 2. New PNR members by division, 2011-2018 (includes Rail Pass members).

Achievement Program Report

Jack Hamilton, MMR, AP Chair

Another among us has completed the requirements for recognition as Master Model Railroad and have been given that designation by NMRA.

Gary Jordan MMR #626, Fourth Division

Gary has been working steadily to complete the requirements and, through his diligent efforts, has finished the quest. Those of us who have had the pleasure of viewing Andy's work know that this is a recognition well deserved.

Congratulations MMR and Well Done!!!

Reminder – Again

If you have a layout but have not yet invited your Division AP Manager or a member of the Evaluation Team to stop by and take a look at your efforts, you are missing out on the benefits of a great program. **Give it a try — you might just like it.**

Awards Earned

Since the last report, we have had a number of earned awards:

- Raymond Clifford** earned a Golden Spike Award
- Dale Armstrong** earned a Golden Spike Award
- James Davis** earned a Golden Spike Award
- Rob Badmington** earned a Golden Spike Award
- Jon Bentz** earned a Golden Spike Award
- Cliff Aaker** earned a Golden Spike Award

The following members have earned Merit Awards for their work:

- Max Magliaro** earned Merit Awards (6) for Structures and (3) for Cars
- Doug Burton** earned a Merit Award for Structures
- Jon Bentz** earned Merit Awards (4) for Structures and (2) for Motive Power
- Rich Blake** earned Merit Awards (2) for Motive Power
- Alan Murray** earned a Merit Award for Structures
- Cliff Aaker** earned Merit Awards (3) for Structures

The following members have earned Achievement Program Certificates:

- Max Magliaro**—Master Builder – Structures
- Gary Jordan**—Association Volunteer
- Mike Shaw**—Association Volunteer
- Herb Buhl**—Association Volunteer
- Doug Thorne**—Association Volunteer
- Raymond Clifford**—Master Builder – Cars, Motive Power, Structures

Congratulations to all. Well Done!

If you ain't havin' fun, you ain't doin' it right!

Division Reports

1st Division

Rich Pitter, Superintendent

First Division will hold a Mini-Meet at the Coos County Fairgrounds in Myrtle Point on Saturday, May 4. Doors open at 9 and the program begins at 10. Refreshments will be available. The meet includes a people's choice model contest, clinics and a workshop, member-to-member model sales tables, update on our PNR Convention to be held in Eugene in April 2020, Board Meeting, and opportunities for evaluations of models for Merit Awards. Attendees will have the option to purchase lunch from a local vendor, to be delivered to the meet at noon. For more information, contact Christopher Jones at llandcij@aol.com.

Additionally, the following popular model railroad events are of interest to many First Division members. Both events will include the First Division table with scenery mini-dioramas for interested show-goers to make and take, while receiving information on NMRA programs and opportunities to help model railroaders to improve their skills and enjoyment.

On April 14–15, the WCMRC will host its 30th annual Model Railroad Swap Meet and Train Show at the Lane County Fairgrounds in Eugene, featuring over 100 vendor tables and several operating train layouts. Time: 105 on Saturday and 10–3 on Sunday.

On May 17–19, the South Coast Train Club, a 100% NMRA Club, will host a show at the Pony Village Mall in North Bend. The show will be open during mall hours, and will feature both personal and club model railroads in several popular scales.

2nd Division

Jeff Shultz, Superintendent

Second Division is moving forward with its plans for more frequent meets, but avoiding conflicts in scheduling is proving difficult. The Division BOD has approved a re-write of the Division bylaws and they are expected to be submitted to the Division for approval at an election later this year.

3rd Division

Jerry R. Thomas, Superintendent

Our convention committee has been hard at work receiving proposals from several area hotels in preparation for our 2021 regional convention. Members will narrow the search and expand the committee to spread out the work as we write our proposal. It will be submitted at Cranbrook, BC at the end of May for sanction.

Our spring meet will be held on Saturday, March 23, 2019. It will open with coffee, sodas, and doughnuts. Railroad videos, a clinic, silent auction, and models for judging and display will be available. After lunch, layouts will be open for visitation. The spring meet will be held at Good Shepherd of the Valley Lutheran Church, 3100 S. Five Mile Road, Boise, ID 83709.

Our group is also very excited about holding our monthly mini-meet in the Jerome–Twin Falls area on April 27, 2019. We will meet at Denny's, 291 Pole Line Road E, Twin Falls, ID 83301. After enjoying lunch together, we will visit the local train shop. From there we will proceed to visit the Jerome Model Railroad Club. We are sincere in our efforts to enlarge our group by establishing greater presence in this area. We hope that division members in eastern Idaho will be able to attend. For further information, call Jerry Thomas at 208-830-6364.

The 3rd Division is very proud that our member Andy Doll, has received Master Model Railroader Award # 621. Check out Andy's article in the February issue of the NMRA magazine. Way to go, Andy.

Having visited Cranbrook before, I am excited this year's regional convention is being held there. Thank you to 6th Division for choosing such an exciting area for us to visit. Check out their convention website for exciting information on tours. Cranbrook, a town of approximately 20,000, has an important railroad history. The town is an important railroad switching point for trains coming north from the United States to the Canadian Pacific mainline. I have visited the Canadian Museum of Rail Travel in Cranbrook and enjoyed their incredible collection of passenger equipment and am looking forward to going back to seeing more. Nearby Fort Steele is a historic gem as a preserved frontier town with skilled reenactors that tell the history of the area. I know my wife is looking forward to going back there as we needed more time to do it justice. We both are looking forward to our second visit to the Cranbrook area. Don't miss this regional convention.

4th Division

Russ Segner, Superintendent

No report this quarter.

5th Division

Bill Fassett, Superintendent

Division 5 has been forced to bid farewell to one of the division's longest-standing hobby shops, Sunset Junction in Spokane. Formerly owned by the late Bob Sample and then operated for the last 20 years by Jim Smith, the shop closed on February 2, a casualty of redevelopment of the "university district" in Spokane, and the sale of the building to Avista. However, its closure has allowed Jim to attain the same desirable state as many of the rest of us—RETIRED! The presence of Sunset Junction has been a boon to the development of the hobby in the Inland Empire, and, though we are sorry to see the business close, we remain grateful to Bob and Jim for their support of NMRA members over the decades. Jim will be a vendor at the upcoming Spring 2019 Model Train Show in Spokane on March 10.

We look forward to several upcoming events in the 5th Division this spring:

River City Modelers Open House: March 9–10, Spokane, WA
Spokane Spring 2019 Model Train Show: March 10, Spokane, WA
8th Annual Lewis–Clark Train Club Model Train Show: March 24, Lewiston, ID
29th Annual Depot Railroad Swap Meet: April 27, Livingston, MT
39th Annual Helena Railroad Fair: April 28, Helena, MT

For more details and contact information, look in the Upcoming Events page of the 5th Division website: www.pnr5d.org.

The 5th Division Annual Business Meeting will be held April 20, in Kennewick, WA. It will be hosted by the Tri-Cities Model Railroaders and attendees will be able to visit the club's brand new layout in downtown Kennewick. Watch the 5th Division website for more information.

6th Division

Ed Molenkamp, Superintendent

Greetings from the 6th Division. We are excited to host this year's regional convention, [Kootenay Express 2019](#), and the planning is going well. There is a report in this issue from a member of the advertising committee with a lot of info (Thank you, Rob.)

We are heading into what I call "show season" with our first show this month in Saskatoon, February 23–24. I am looking forward to attending all of these events with other 6th Division members advertising for the convention.

All of our upcoming shows are on the Upcoming Events page of the PNR site and are also listed in the Timetable towards the end of this newsletter.



7th Division

John Martin, Superintendent

Happy New Year to you all, on behalf of the Board of Directors and the membership of the 7th Division.

We're making progress on our plan to offer a local clinic or mini-meet in every subdivision to add value to NMRA membership. The size of our area makes the task difficult, especially with winter weather thrown in, but things look good for 2019.

The Vancouver Train Show in November 2018 was a success and the event seems to be moving into a solid financial position. Organizers have already started work on the 2019 show.

If you've read this far into *The Switchlist*, you've probably already seen the article by Marc Simpson about our annual Railway Modellers Meet of British Columbia (RMMBC). We would sure like to see you there on May 3–5. We've upgraded the lecture rooms to improve your view and the event includes layout tours, operating sessions, clinics, and presentations by guest speaker Lance Mindheim. It's a pretty good deal—and right here in your own backyard. Here's the link: railwaymodelersmeetofbc.ca

As Ed Molenkamp mentioned in his 6th Division report, [Kootenay Express 2019](#) is the Pacific Northwest Region's convention this year, hosted by our neighbours in the 6th Division and being held in Cranbrook, British Columbia, May 29–June 2. The Canadian Museum of Rail Travel has improved and expanded and will be free to convention guests. Hope to see you there.

PNR Interchange

The **PNR Interchange** is a free service for PNR members wishing to buy, sell, donate, or exchange model or prototype railroad related items. Commercial enterprise transactions and advertisements are not allowed except as provided for hobby stores below. Members may also use this service to request or solicit hobby or railroad related information, research results, and other resources or materials from other members. Members' classified ads and notices are restricted to text format only (no graphics) and length should be no longer than 120 words. Sequential ads of the same nature or having the same or nearly same content are not permitted. The suitability of submitted classified ads for publication is determined at the sole discretion of the Switchlist Editor. Email your submission along with your NMRA membership number to the Editor at switchlist@pnr.nmra.org

Hobby stores that support model railroading may include an advertisement in PNR Switchlist. The ad is limited in size to a business card size and should be provided in ready to copy and print format as determined by the Switchlist Editor. Advertisements for hobby stores that provide a discount for NMRA members shall be so identified with the advertisement. Hobby store ads may be run sequential issue to issue.

FOR SALE: The 3rd Division has back issues of the *Short Line and Narrow Gage Gazette* for sale. We have issues from the 90's to 2016 and they are ONLY \$1.00 each plus shipping. Contact Tom Waters at 208-375-4796 or email twaters8@msn.com.

FOR SALE: 3-rail O-gauge locomotives, rolling stock, track, and structures. E-mail to rrbill10@comcast.net for a pdf or send an SASE to Bill Pyper, PO Box 885, Salem, OR 97308 for list with pictures.

**YOUR AD OR REQUEST FOR INFORMATION
EXCHANGE COULD BE HERE!**

**Do you have “excess” model railroad equipment, kits, or supplies?
Searching for that “special run” or hard-to-find locomotive?
Looking for prototype or historical photos, track diagrams, or other information?**

**Place your classified ad here in the PNR Interchange and
connect with fellow PNR members!**

Timetable

To add your events or activities to the Switchlist Timetable, PNR web page, and PNR Train Orders, contact the Timetable Editor, Mark Johnson at timetable@pnr.nmra.org

2019

Feb 9 (Sat), Portland, OR

Second Annual Bridgetown Prototype Modelers meet at Shilo Inn Portland Airport, 11707 NE Airport Way 9 a.m.-5 p.m. We encourage railroad modelers (model railroaders) to bring their creations completed or in progress to share with others. Info: Bruce Barney: bcbarney@msn.com

Feb 16 (Sat), Vancouver, WA

SP&S Railway Historical Society Railroad Swap Meet. 9:30 a.m. to 2:30 p.m. This will be held at Warehouse23, 100 Columbia St, Vancouver, Washington. Parking across the street, or on the street. Admission: \$6.00, under 12 free. 8' tables are available for \$30. For more information or table rentals, contact: Jim Leonard jpl2004@comcast.net

Feb 23–24, Saskatoon, SK

All Aboard Model Train Show. Western Development Museum, 2610 Lorne Ave. Saturday 9–5:00, Sunday 9–4:30. Layouts, Vendors, and Consignment Tables. Info: www.prairierailworkshop.com/train-show, allaboardtrainshow@gmail.com

Feb 23-24, Monroe, WA

United NorthWest Model RR Club's 28th Annual Model Train Show and Marketplace, Evergreen State Fairgrounds. Saturday 10–5, Sunday 10–4. Layouts, vendors, clinics and entertainment. Benefitting Snohomish County 4-H Foundation. Info: www.unwclub.com/unwshow.html email: tables4unw.trainshow@gmail.com

Mar 1-2, Calgary, AB

Railroad Prototype Modellers Meet, St. Andrews Presbyterian Church, 703 Heritage Drive SW. Friday 7 p.m.–9 p.m.: Slide Night, with an emphasis on subjects you can model. Bring some slides or digital images to show; Saturday 10 a.m.–4 p.m.: Show and Tell to share modelling ideas, four clinics, draw tickets for displaying your models. Door Prizes! Entry for all sessions is \$10 Info: Dave Audley, 403-275-1869 daudley@telusplanet.net

Mar 2 (Sat), Elsie, OR

The 15th Annual Pacific Model Loggers' Congress-takes place at the Camp 18 Restaurant and Logging Museum, 42362 Highway 26, Elsie, Oregon. Info: www.pacificmodelloggerscongress.com

Mar 3 (Sun), Calgary, AB

CMRS Spring Mini-meet follows the CMT Flea Market at 11:00 at the Glenmore Inn with several clinics lined up, along with Show and Tell. www.calgarymodelrailway.ca/mini-meets.html

Mar 3 (Sun), Calgary, AB

CMT Annual Flea Market, Glenmore Inn, 2720 Glenmore Trail SE (corner of Glenmore Trail and Odgen Road, SE). The Flea Market runs from 8:30 to 10:30. Time to start putting aside those items you no longer need so that you can buy more stuff that you do need! Tables are \$20 each, half tables can be booked for \$10. To book a table, contact Brookes Harrow at bharrow@nucleus.com or 403-201-4937.

Mar 9 (Sat), Portland, OR

Willamette Model Railroad Club 34th Annual Swap Meet. Jackson Armory, 6255 NE Cornfoot Rd, Portland, Oregon 97218 Info: wmrswapmeet@yahoo.com or visit our Facebook page at www.facebook.com/events/704921526367515

Mar 9-10, Spokane, WA

River City Modelers open house, 1130 E. Sprague Ave., Spokane, WA 99202. Visit the River City Western HO scale model train layout. The 45 x 40 ft. two-level layout is a work in progress. Much of the scenery is completed, track work is mainly done and details are being worked on. There are approximately 19 scale miles of main line track. Open from 4 to 8 p.m. on Saturday and Noon to 4 p.m. on Sunday. Contact 509-535-3462 for more information.

Mar 10 (Sun), Spokane, WA

The Spokane Train Show by the River City Modelers. 9:30 a.m. until 3:30 p.m. at the Spokane Fair & Expo Center, Bldg. A, B and C, 404 N. Havana St. Over 200 tables of railroad-related items for sale, model and toy trains, photos, books, toy autos and trucks, bridges and buildings, train memorabilia, old lanterns, signs, china, linens, switch locks and keys, and much more. Operating train layouts in N, HO, S, O, and G Scales plus a very large Free-mo layout. Operation lifesaver and a LEGO layout will be there too. Admission: \$6.00, 12 and under free. For more information and table rentals, contact: Shirley Sample, P.O. Box 3065, Spokane, WA 99220 or cell 509-991-2317, home 509-292-8332. Email: shirley@busnws.com.

Mar 10 (Sun), Nanaimo, BC

34th Annual Vancouver Island Spring Model Railroad Show. Beban Park Rec Center, 2300 Bowen Rd. Open 10 a.m.–4 p.m. Operating Model Railroad Layouts, Vendors, Swap Tables, Popular Vote Contest. Info: Ken Rutherford (250) 724-4698 email kj.rutherford@shaw.ca

Mar 16-17, Lethbridge, AB

Southern Alberta Model Railway Club Open House at the expanded club building in Gyro Park, 15th Street and 10th Avenue A South. 11 a.m. to 4 p.m. both days. Info: www3.telus.net/samrc/ or Bill Smienk bsmienk@telus.net

Mar 16 (Sat), Edmonton, AB

MMRF Spring Swap Meet. Central Lion's Senior Citizens Recreation Centre, 11113 113 St. 9 a.m.–Noon, Admission \$3. Info: Ric Francoeur, swapmeet@mmrf.ca Ph. 780-458-1032 www.mmrf.ab.ca

Mar 16 (Sat), Corvallis, OR

Winterail Railroad Photography Exposition & Railroadiana Show. 9 a.m.–10 p.m., Corvallis High School – Student Center, 1400 NW Buchanan Ave. Info: www.winterail.com

Mar 23–24, Moose Jaw, SK

Model Train Show. Sponsored by the Thunder Creek Model Railroad Club. Western Development Museum, 50 Diefenbaker Drive. The museum is open from 9 a.m. to 5 p.m. Admission is \$10 for adults which then provides full access to the show and all museum exhibits. There is no charge for show participants or vendors who may rent tables for a small fee. Info: www.tcmrc.org

Mar 23 (Sat), Boise, ID

3rd Division NMRA Spring Meet, Shepherd of the Valley Lutheran Church, 3100 S. Five Mile Rd., Boise, ID 83709 (Victory and Five Mile). Registration: 8:00 a.m. Meet: 9:00 a.m. Coffee, Donuts, Conversation, Clinics, Favorite Model Contests, NMRA Achievement Award judging, Displays, Silent Auction, Layout Tours. Info: pnr.nmra.org/3div/default.htm or Chris Mesa cmesa57@gmail.com

Mar 24 (Sun), Lewiston, ID

8th Annual Lewis-Clark Train Club and Collectables Swap Meet, 9:30 a.m. to 4:00 p.m.. Nez Perce County Fairgrounds, 1229 Burell Ave. Admission: \$5 and children under 12 free with an adult. There will be vendors from around the Northwest with displays, railroad collectables, and layouts. Info: Dan Wise, wrails@cablcone.net, 208-816-0845 (cell) or Mike McGee, 208-816-6072; www.lewis-clarktrainclub.com

Mar 24 (Sun), Burnaby, BC

Western Rails 2019. Displays and models of all kinds. Operating model layouts, collectables, photos, timetables, keys, locks, lanterns, buttons, china, telegraph equipment, and much, much more. Cameron Recreation Complex, 9523 Cameron St. (behind Loughheed Town Centre) 9 a.m. to 4 p.m. Admittance (cash only): Senior (60+) and Youth (6–15) \$4, Adult (16–59) \$8, Child (under 6) Free, Family \$20 (Maximum 2 Adults, 3 Youth). Info: westernrails@wcra.org 604-484-2791.

Apr 13–14, Calgary, AB

SUPERTRAIN 2019. Canada's Largest Model Train Show. 9 a.m. to 5 p.m. both days. Genesis Centre, 7555 Falconridge Blvd. NE, Calgary. FREE PARKING at McKnight-Westwinds C-Train Station with free shuttle. Adult: \$15, under 16: free. Over 70,000 sq. ft. of operating layouts, exhibits and displays, railroad artists, hobby shops, model manufacturers, demonstrations, clinics, museums and railroad historical associations, Lego and Thomas Play Area, garden railways, ride-on trains, and much more. Info: www.supertrain.ca or email to info@supertrain.ca

Apr 27-28, Prince Albert, SK

2019 Prince Albert Model Train & Hobby Show at the Prince Albert Golf & Curling Club. 900-22nd St E Saturday 9–5; Sunday 10-5. info: riverxingnorth.webs.com/

Apr 27 (Sat), Twin Falls, ID

3rd. Division Mini-Meet in Twin Falls-Jerome. Noon at Denny's Restaurant, 291 Pole Line Road E, Twin Falls 83301. Info: jerryrthomas.jt@gmail.com or 208 830 6364

May 3–5, Burnaby, BC

Railway Modelers Meet of British Columbia (RMMBC) at Simon Fraser University. The emphasis is primarily on "modelling," as the name implies, with many interesting clinics, layout tours, and operating sessions. Full information and registration is at: railwaymodelersmeetofbc.ca/

May 4 (Sat), Myrtle Point, OR

Spring 2019 Mini-Meet Myrtle Point on May 4 at the Coos County Fairgrounds. Doors open at 9 a.m. with coffee and donuts provided, and the meet begins at 10 a.m. We will discuss the 2020 PNR Convention, and a tree building make-and-take clinic will be provided by Coastmans Scenic Products. Local layouts will be available for viewing. A model contest will be held, and members may bring model railroad items for sale (bring tables for sales). Lunch items will be available for purchase at the mini-meet, and a First Division Board Meeting, which is open to all members, will be held during lunch. Contact Christopher Jones (LLLandCJ@aol.com) with any questions. Info: pnr.nmra.org/1div/

May 5 (Sun), Colwood, BC

Victoria Model Railway Show — 29th Year. Juan de Fuca Recreation Centre, 1767 Island Highway. 10 a.m.–4 pm. Contact: Ted Alexis 250-595-4070

May 25–26, Carstairs, AB

Model Train and Hobby Extravaganza. Carstairs Curling Club, 350 11th Ave (West of CO-OP). Saturday 10 a.m.–5 p.m., Sunday 10 a.m.–4 p.m. Admission: \$5, kids 5 and under free. Info: Rick, 1mvmrc@gmail.com, 403-556-8121 (home), 403-507-3314 (cell)

May 29–Jun 2, Cranbrook, BC

The Kootenay Express 2019. NMRA Pacific Northwest Region Convention at the Prestige Inn. Clinics, model contest, AP evaluations, prototype and layout tours, and much more. For updates, see: www.kootenayexpress2019.ca

Oct 12-13, Spokane, WA

River City Modelers open house, 1130 E. Sprague Ave., Spokane, WA 99202. Visit the River City Western HO scale model train layout. The 45 x 40 ft. two-level layout is a work in progress. Much of the scenery is completed, track work is mainly done and details are being worked on. There are approximately 19 scale miles of main line track. Open from 4 to 8 p.m. on Saturday and Noon to 4 p.m. on Sunday. Contact 509-535-3462 for more information.

Oct 13 (Sun), Spokane, WA

The Spokane Train Show by the River City Modelers. 9:30 a.m. until 3:30 p.m. at the Spokane Fair & Expo Center, Bldg. A, B & C, 404 N. Havana St. Over 200 tables of railroad related items for sale: model and toy trains, photos, books, toy autos and trucks, bridges and buildings, train memorabilia, old lanterns, signs, china, linens, switch locks and keys, and much more. Operating train layouts in N, HO, S, O, and G Scales plus a very large Free-mo layout. Operation lifesaver and a LEGO layout will be there, too. Admission: \$6.00, 12 & under free. For more information and table rentals contact: Shirley Sample, P.O. Box 3065, Spokane, WA 99220 or cell 509-991-2317, home 509-292-8332. Email: shirley@busnws.com.



Partnership Program

NMRA members can log in at www.nmra.org and click on the Benefits tab to view the NMRA Partnership Program. Please patronize all of our partners for some fantastic discounts as an NMRA member!

Not getting the bi-monthly *NMRA eBulletin*?
The *NMRA eBulletin* comes out every other month

Email: nmrahq@aol.com

Phone: 423-892-2846 (8 a.m.–4 p.m. ET)

Mail: P.O. Box 1328, Soddy Daisy TN 37384-1328

Pacific Northwest Region Staff

Officers

President: Kurt Laidlaw, 253-495-8351, ananas99@klaidlaw.net sebelley@shaw.ca
Vice-President: Bob Parrish, MMR, 208-866-4601, bobparrish770@gmail.com **Asst. Treasurer (US):** *Position vacant; please volunteer!*
Secretary: Jerry Enders, 360-830-0560, jerend@wildblue.net **Office Manager:** Ed Liesse, 253-529-7405, EEliesse@aol.com
Treasurer: Dave Liesse, 253-343-3445, nmradave@liessefamily.net **Immediate Past President:** Jack Hamilton MMR, 360-308-9845, gradiver@wavecable.com
Asst. Treasurer (Canada): Larry Sebelley, 604-858-5717,

Committee Chairs

Achievement: Jack Hamilton MMR, 360-308-9845, gradiver@wavecable.com **Nominations:** Brian Stokes, 708-904-1168, bstokesndp@gmail.com
Ballot, USA: *Position vacant; please volunteer!* **President's Award:** Dave Liesse, 253-343-3445, nmradave@liessefamily.net
Ballot, Canada: Richard Sutcliffe, 604-467-4301, ras1@uniserve.com **PNR Registered Agent:** Elaine Crueger, 541-847-5779, elainecrueger@gmail.com
Contest: John DeSteeze, 590-783-4665, greenriverrail@safe-mail.net **Switchlist Editor:** Greg Kujawa, 406-589-6256, switchlist@pnr-nmra.org
Convention: Larry Sebelley, 604-858-5717, sebelley@shaw.ca **Webmaster:** Mark Johnson, 780-436-2480, webmaster@pnr-nmra.org
Education: *Position vacant; please volunteer!*
Membership: Shirley Sample, 509-292-8332, shirley@busnws.com

Division Superintendents

1st Division: Rich Pitter, 541-636-3833, richpitter@aol.com **5th Division:** Bill Fassett, 509-468-4900, b.fassett@comcast.net
2nd Division: Jeff Shultz, 503-769-1414, jeff@shultzinfosystems.com **6th Division:** Ed Molenkamp, 780-455-1479, 6divsuper@pnr-nmra.org
3rd Division: Jerry Thomas, 208-830-6364, jerryrthomas.jt@gmail.com **7th Division:** John Martin, 604-594-9719, jamartin@jdmartin.ca
4th Division: Russ Segner, 425-228-7327, russseg@gmail.com

Pacific Northwest Region National Model Railroad Association

-  **Division 1:** Southwestern Oregon
-  **Division 2:** Northwestern Oregon, Southwestern Washington
-  **Division 3:** Southern Idaho, Eastern Oregon
-  **Division 4:** Western Washington, Alaska
-  **Division 5:** Eastern Washington, Northeastern Oregon, Northern Idaho, Montana
-  **Division 6:** Alberta, Saskatchewan, Northwest Territories
-  **Division 7:** British Columbia, Yukon

