



The Switchlist

Official Publication of the Pacific Northwest Region, National Model Railroad Association

February 2016

Form 255
UNION PACIFIC RAILROAD COMPANY

SWITCH-ENGINEMEN'S DAILY REGISTER

FOREMAN	No. of Helpers	ENGINEER AND FIREMAN	Compared Time	Job Worked	Highest Bulletin Number	Left Round House or Motor Track	SHIFT WORKED		Arrived Round House or Motor Track	HOURS WORKED			Accumulated Miles	Explanation of Meal Period, Overtime, Delays, etc.
							Began Work	Quit Work		Meal Period	Straight Time	Over Time		

Illinois Central Gulf Switchlist

YRS15, Friday, February 7, 1982
 at: Reserve
 Time: 7:15 AM Throttle: 0
 Next Yard: St. Rose, LA
 Draw Maderc
 Origin: Reserve, LA
 No: 7-027
 Destination: St. Rose, LA
 UP 2701 Cabin: 199044

be SPOT NxtLoc Tons Contents Hdg

Hall 2 42 700M 4865
 Form 818-A Standard—Small
**SWITCH CARS CAREFULLY AND SAFELY
 AVOID ROUGH HANDLING**
 Santa Fe
 (Insert Name of Railway Company)
SWITCH LIST

At Station 1-3-18
 Train No. 350/p Engine No. 470/p Time 6/p M.
 CAR

Initials	No.	Contents	Destination	Consignee	Tonnage
Williams	20	Broz			
44	70	20			
44	70	20			
44	70	20			

In This Issue

- PNR Convention: Selkirk Express 2016
- Roger Ferris Honored
- Call for Candidates
- Volunteering
- Officer, Staff, and Division Reports
- Timetable

N.P. LOCAL SWITCH LIST
 SWITCH LIST OF ALL WORK TO BE DONE BY CONDUCTOR

TRAIN NO. _____ ORS3

Duplicate AT STATION

INITIAL	NUMBER	CONTENTS	FROM
1			
2			
3			
4			
5			
6			
7			



Salmon Arm, British Columbia
 July 15th - 19th, 2016

Temp 70
 Feb 15
 7000





The Switchlist

Editor:

Greg Kujawa
703.772.0207

Email: switchlist@pnr.nmra.org.

The Switchlist is the official publication of the Pacific Northwest Region, National Model Railroad Association and is published quarterly in February, May, August, and November.

SUBSCRIPTIONS

The Switchlist is available free of charge online at the PNR website, pnr.nmra.org. PNR members with current email addresses on file with the NMRA will receive an email notice when the latest issue is posted. To receive notice when the next *Switchlist* is posted (and other news of interest to PNR members), join our email list by sending a blank email to:

PNR-NMRA-subscribe@YahooGroups.com

CONTRIBUTIONS

Readers of *The Switchlist* are encouraged to submit news, articles, photos, and drawings about PNR activities past, present and future, and articles on other aspects of model railroading are also appreciated. If the work of others, is being included, please ensure you have their written permission and include attributions as appropriate. All contributions must be digital and preferably in file formats compatible with the Microsoft platform.

Photographs and illustrations are encouraged in all common digital formats. The Editor reserves the right to accept, reject, and edit contributions as space, time, and suitability of material dictate. *The Switchlist* does not pay for articles.

Please email your contributions to the editor at switchlist@pnr.nmra.org. Deadline for submissions is:

February 1
May 1
August 1
November 1

Letters to the editor and other editorial opinions are those of the author and do not necessarily reflect opinions and policy of the PNR or NMRA. Complete staff and contact information is available in this newsletter and on the PNR website: pnr.nmra.org.

ADVERTISING

Non-commercial Classified Advertising will be accepted from PNR members at no charge as a member service; email submissions to the editor.

© 2016 Pacific Northwest Region, National Model Railroad Association. Permission to reprint is granted to all affiliates of the NMRA. Others may request permission to reprint from the Editor.

Welcome!

Hi! It's good to "see" again those of you who were in the Pacific Northwest Region back in 2011. And, a sincere Welcome! to all the new members who have either joined the NMRA or moved to the PNR from another Region since 2011. This is the first issue of *The Switchlist* in nearly five years, during which time the PNR sought someone to fill in behind former editor Al Lowe. (Al, on behalf of the entire Region, thanks so much for your many years of great service to the PNR!)

As your new editor, I'd like to briefly introduce myself. I've been a member of the NMRA since 1991 and the PNR from 1991 to 2005. My career took me to Washington, DC for a few years, where I was part of the Mid-Eastern Region. Then in 2014, I was fortunate enough to "escape" to retire back in the West, specifically Bozeman, Montana. At the Portland Convention last summer, I'd heard about the vacant *Switchlist* editor position and saw this as an opportunity to contribute to the PNR and NMRA, plus connect with fellow modelers even though I was geographically remote. So I raised my hand and, as they say "the rest is history."

Anyway, there's lots for us to catch up on and more headed our way this year. Inside this issue, you'll find information about this year's regional convention being hosted by the 7th Division. The [Selkirk Express 2016](#) will be June 15-19 in Salmon Arm, British Columbia. There's basic information in this *Switchlist* and much more on the convention website. So, be sure to get this event on your summer schedule. While it's still winter, now's the time to be working on your entries for the contest or AP merit awards.

A call is out for candidates for the PNR President and Vice President positions; we also need volunteers to lead four regional committees. Walt Huston, Immediate Past President, has written an inspiring piece about volunteering.

Please check out the Timetable here in *The Switchlist* or on the PNR website, where you'll find many upcoming model railroad events across the Region for your enjoyment, inspiration, and fellowship.

Since moving back to the PNR, I've noticed it appears to be the geographically largest of any NMRA region within the U.S./North America. So, we can probably assume at least a few PNR members live in relatively remote locations. This newsletter, along with Division newsletters, may be the only link these folks have with fellow model railroaders in the "neighborhood." *The Switchlist* is our communication channel with the entire PNR membership and I want to ensure it helps meet your needs for timely, useful model railroading information while fostering a sense of connection with other members.

Now, here's the pitch...this newsletter's value is multiplied when material is contributed by you, our members. Please consider submitting local news, an article, photos, or other model railroading information that may be of interest to fellow members. This is a great way to share your knowledge and experiences. If you found the item interesting, chances are others will too.

If you're at all interested in the NMRA Achievement Program (AP), you can earn Author credits for your effort. You don't have to be a stellar writer—I'll help smooth out your piece. If you have questions or want to kick around ideas for a potential submission, don't hesitate to send me an email or discuss your ideas with your Division Superintendent or AP chair.

I look forward to meeting and working with you!

Greg Kujawa, Editor

PNR News and Announcements

Selkirk Express 2016

David Walker, Chair

Here is an update for the Selkirk Express 2016, which is fast approaching in June; it is now only four months away. Online registration is now available.

The host hotel is the Prestige Harbourfront Resort in Salmon Arm, British Columbia, and bookings can now be made. The Promo Code is: **Selkirk Express 2016**. We have had some issues with the website bookings, which are being resolved. But you can call the hotel directly at 1-250-833-5800 to book a room. [U.S. residents please note this may be billed as an international call. – Ed.] A block of 60 rooms has been set aside for the convention, so book early. Room rate information is on the website. Links to alternative accommodations are also on the website.

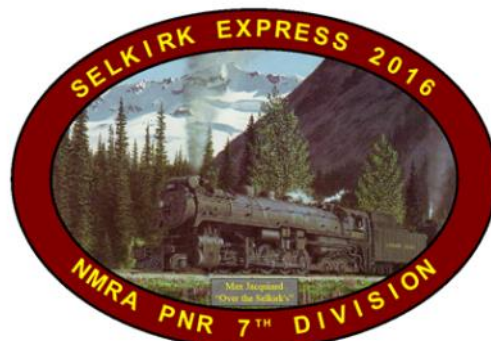
A Spouse/Partner tour is scheduled for Saturday June 18. This bus tour excursion around the region is entitled **No Tracks No Trains, Just Fun and Games**. More information is on the website. We are working on other possible events for the first two days of the conference.

The main activities include: PNR Board and general meetings, prototype and layout tours (some self-guided), clinics, Burger-and-Beverage Night, contest and RPM room, banquet, and a train show. The clinic program is still being confirmed and put together; preliminary information should be available in February. The self-guided layout tours should also be confirmed at the same time.

A full range of NMRA contest categories and AP judging will be available. Contest entries will be accepted until 12 noon on Saturday, June 18, 2016. Check out the special modeling contest on the website and build the Crossing Shanty from [Inter-Action Hobbies](#). The intent of this contest is to kitbash the shanty into any other type of building except the shanty. If you have any questions, email the Contests Coordinator noted on the Contact Us page of the website.

The convention registration form is on the website. Should you want a hard copy of the form, contact the Registrar through the Contact Us page or send an email to registrar@selkirkexpress2016.ca.

Visit the website at www.SelkirkExpress2016.ca. Looking forward to seeing everyone in June 2016!



Salmon Arm, British Columbia
June 15th – 19th, 2016



Roger Ferris awarded *Fellow of the NMRA*

From 4th Div website:

From time to time, the National Model Railroad Association takes special notice of the service and contributions of members and recognizes that contribution through one or more of several special awards. Tonight, on behalf of NMRA president Charlie Getz, the Board of Directors, and the NMRA membership, I have the honor of recognizing one of our own. Tonight's honoree is well known to all of us in the Pacific Northwest Region for his years of dedicated service and his boundless energy and willingness to undertake any challenge. His personal leadership has been a mainstay in the success we all enjoy in our hobby and through our membership in the NMRA. He has served as a personal role model for all of us in our dealings with each other and in finding the ways to get the most out of our NMRA fellowship.

The *Fellow of the NMRA* award is granted to those in the National Model Railroad Association who have fostered the organization and the hobby and have increased or advanced social interaction and the social benefits of the hobby. In the history of this award, only 18 other individuals have been so recognized.

(Editor's note: Jack Hamilton presented this award to Dr. Ferris at the Seattle North Clinic on November 5, 2015.)

Call for Candidates!

This is an election year for the PNR President and Vice President positions. These officers serve two-year terms beginning on September 1 of even-numbered years. So, we will be holding an election this spring. Please seriously consider offering your time and talent to help lead the PNR. But don't delay too long in your decision—we need nominations soon because *The Switchlist* May issue needs to include the Candidates' Statements and Election Ballot.

Volunteering!

Walt Huston, Immediate Past President

Along with the two officer positions mentioned above, the PNR is also searching for volunteers to serve as chairs of the following committees—Ballot (USA), Education, Membership, and Nominations. The position duties and responsibilities can be found in the PNR's [Policy Manual](#) posted on the website. Please consider raising your hand for one of these, even if for just a short period of time.

Practically everything that gets done by and for the NMRA is done by people who care. These caring people are dedicated volunteers who do what they do for the good of the organization. Some of these people do quite a lot, others do less, but all do as much as they are able. Are you one of these people?

NMRA is much like any other large organization. About 10% of the membership actually belongs in the classification of Active Volunteer. If you look at everything that gets done by the NMRA, you can see what volunteers can accomplish. Just think about what could be done if the number of people volunteering were to double to 20% of the membership. That might not double the achievements, but it would certainly increase them, and perhaps take some of the burden off of those who have been volunteering for so long.

Are you able to volunteer just a few hours a month to your organization? If the answer is yes, contact your Division Superintendent and let them know you are available. I'm pretty sure your Superintendent can find something you can do to help.

I have been volunteering for NMRA for quite a few years. I have assisted at several levels, including Clinician, Division Board Member, Division Superintendent, Region Vice-President, Region President, and more. I continue to volunteer on a regular basis. Most recently, I volunteered to teach and help children learn how to run a train/switch a yard... at an appropriate speed. This was at the recent Pacific Science Center show put on by the 4th Division. I tell you these things so that you will know I know what it is to be a volunteer.

I don't expect everyone can volunteer as much as I have. All I ask is that you look at what you can do and that you do what you can. Thanks!

Vancouver Train Expo 2015

Dick Sutcliffe, Publicity Coordinator, 7th Div, PNR, NMRA Canada

We just completed a very successful Vancouver Train Expo, with 5,000 participants.

On November 7–8, we hosted 4,500 members of the public, about 120 NMRA members and about 350 exhibitors, vendors, and volunteers. That's over twice the attendance we had just two years ago. This year we moved to the PNE Forum, with almost 50,000 square feet of exhibit space, plus clinic and contest rooms—almost double what was available at Cameron Recreation Centre. Thank you to all the participants and volunteers especially.

Exhibitors loved the ability to drive into the hall for setup and takedown. Disabled people and folks with child strollers loved the easy access and wide aisles. Everyone loved the trains and the antique bus displayed by the West Coast Railway Association and the Transit Museum Society.

The show committee, on the basis of extensive community consultation, feels that it's vital to the health of the hobby to attract new blood, and the best way to do that is to attract families with small children. Therefore, we've worked hard to encourage family-friendly exhibits like wTrak, Lego, WCRA MiniRail, Gordon Hall's "Island of Sodor," and Toy Train Operating Society as well as the traditional modular layouts. Check out the videos via our website to see how successful we were.

The committee seems to be reaching their goals as we had meet activities as well as a great show. There were great displays of model railroading in scales/gauges N, TT, HO, O, G, and 7.5". Many swap/sales tables offered opportunities to enhance or reduce our collections. The meet attendees were offered clinics on both days, a video tour of four layouts with owners in attendance, all capped by a banquet Saturday evening. There were a few minor glitches, but overall a great weekend. Video of the event is online at: <http://www.vancouvertrainexpo.ca>

Officers' Reports

President's Report

Shirley Sample

I would like to wish everyone a Happy New Year. For those who didn't know, I was volunteered to fulfill the rest of the President's term for the PNR. I would like to say "Thank you" to Greg Kujawa who volunteered to take over publication of *The Switchlist*. He has a lot of great ideas and welcomes input from the membership. He would appreciate receiving articles written by members to include in future publications.

The upcoming PNR Convention "Selkirk Express 2016" will be held in Salmon Arm, BC, June 15–19. The volunteers in the 7th Division have been doing a great job of planning and have several great clinics, layout tours, and extra fare tours available. They will also have a huge public show with displays, layouts, and Free-mo modules. Their website is www.selkirkexpress.ca. Check it out and be sure to get registered.

As mentioned earlier in the newsletter, we are currently seeking volunteers for Nominations, Ballot, Education, and Membership chairmen. If you would like to find out more about any of the positions, please feel free to contact me. Also, nominations for both the President and VP positions will need to be done soon as the terms expire the end of August and election information needs to be published in the next newsletter.

Our membership for PNR is staying steady. We currently have 1642 members total—1178 US members and 465 Canadian members. The Board has been encouraging each Division Superintendent to appoint a Division membership person. I know some of the divisions have done this recently and have had a presence at some of the local train shows and swap meets.

Jack Hamilton continues to work on the PNR Achievement Program. So, hopefully we will have a few more master model railroaders to announce at the Convention.

Check out the NMRA website as they have done more updates and changes.

Vice-President's Report

Don Locke

No report this quarter.

Treasurer's Report

Dirk Kruysman

The financial year for the PNR starts on October 1. To date it has been very quiet—one check to the State of Oregon, where the PNR is registered as a non-profit corporation; and our Canadian treasurer, Larry Sebelley, provided a check for \$1,000 (CAD) as a loan to help our upcoming PNR convention, the Selkirk Express 2016. Our current financial position is strong. We have more than \$16,000 in our US bank account and our Canadian bank account exceeds \$5,000. In addition to that, we have savings and investment accounts in both countries and they exceed \$40,000. All in all, our finances are in good shape.

Office Manager's Report

Ed Liesse

Since there's been no report since 2011, the following charts will give you some idea of changes and trends in membership from then until now. The charts are for the years 2011–2015, with only partial data for December, 2015. Terms are defined below, with reference to the applicable chart.

Total PNR membership for 2011–2015 is shown in fig. 1. **Membership** is the count of active members in all categories.

Membership by Category (fig. 2) is the count of members at the end of December 2011–2015 by their registered

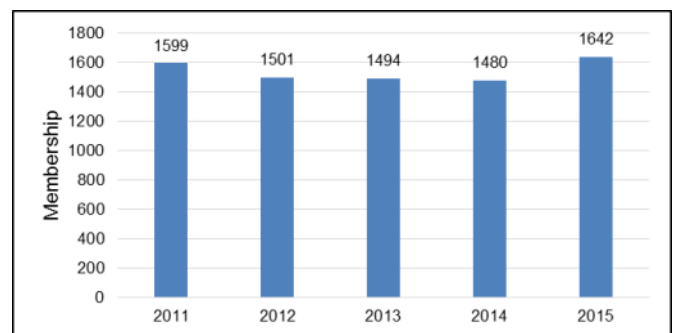


Fig. 1. Total PNR membership (all categories)—2011-2015.

membership category—

Reg being Regular Member

Fam being a Family Member

Life being a Life Member (Other than Honorary Life Member, this class of membership is closed. So the numbers continue to decline, as to be expected)

Rail being a Rail Pass Member

Sust being a Sustaining Member (usually corporations or clubs)

Stud being a Student Member (under 18 years of age or a full-time student between 19 and 25)

PNR membership by category and division is illustrated in figure 3.

Figure 4 displays the trend in new and deceased PNR members since 2011 and figure 5 shows the number of new members by division and year. **New Members** indicates new members joining in any of the membership categories. **Deceased** indicates the number of members reported as having died sometime prior to that year. Reported deaths are often “catch-up” reports that may have occurred months or years before, especially if the member has not been active in local events.

We need to be welcoming all new members and get them actively involved in local activities and especially those members who joined with the Rail Pass. At the very least, hopefully all are being greeted with a welcoming letter from the Division Superintendent or Membership Chair or via some form of personal contact. We need to make an effort to keep these members on the membership roster. More on this later.

MMRs is a count of current Master Model Railroaders at the end of December (fig. 6 and 7). As a side note, the 31 MMRs in the PNR as of December, 2015, are about 7% of the approximately 469 living MMRs listed on the NMRA website.

As you look over the various charts, you can see how the totals have changed through the years. The number of New Members far exceeds the number of Deceased, but yet the total Membership doesn’t change proportionately. Somewhere we keep losing members and a large number of these losses occur from the Rail Pass category. This means we need to pay close attention to the new Rail Pass Members and make a distinct effort at retaining these people! When we do hear from some of the dropouts, the biggest reason given is that they were never contacted by anyone after joining! Admittedly, some of these people do live in remote areas and maybe aren’t able to take part in “local” activities, but we still need to welcome them and work to find ways to keep them involved. If your Division has a website or web-based newsletter, make sure these new members get signed up to receive the latest news. The same holds true for sending them a link to the PNR website. Follow-up with the new members should be a priority for all of us!

If there are any questions about any of the data, or if you would like to see the raw numbers (available by division and month for each of the five years), please feel free to contact me and I’ll do my best to give you the answers!

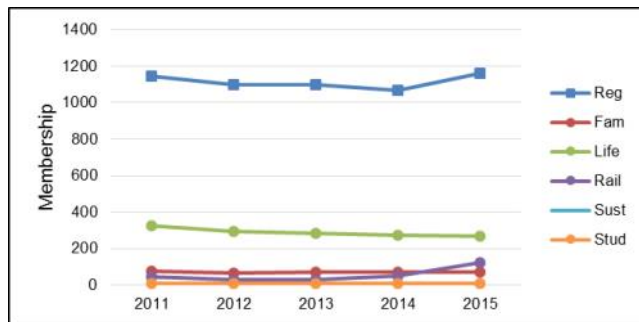


Fig. 2. PNR membership by membership category—2011-2015.

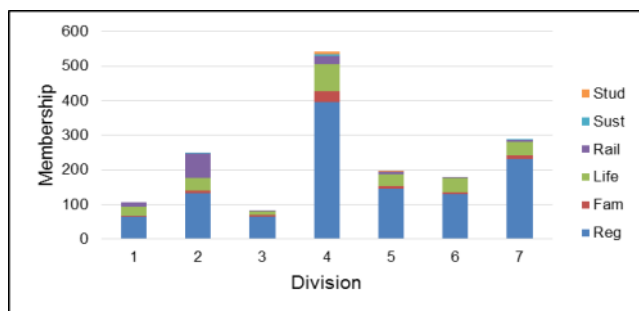


Fig. 3. PNR membership by member category and division (as of December 2015).

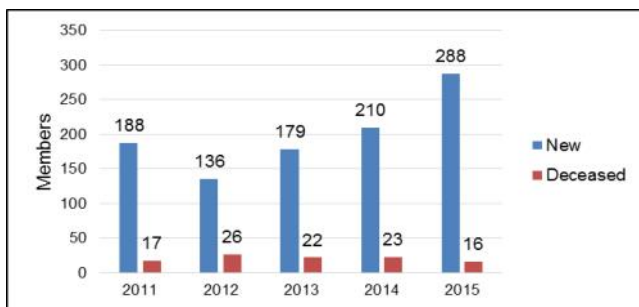


Fig. 4. New and deceased PNR members—2011-2015.

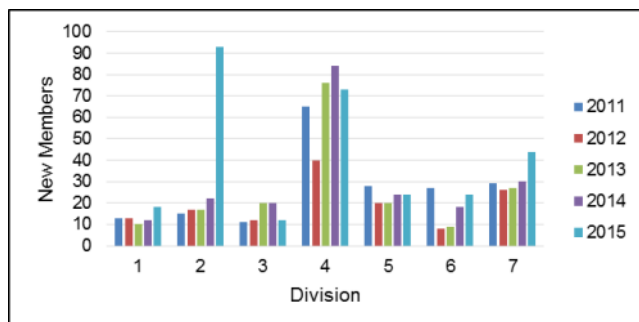


Fig. 5. New PNR members by division—2011-2015.

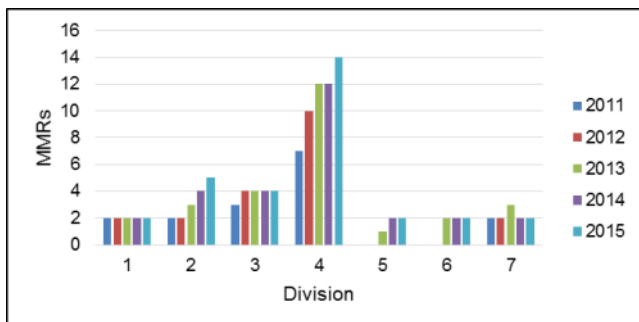


Fig. 6. PNR MMRs by division—2011-2015.

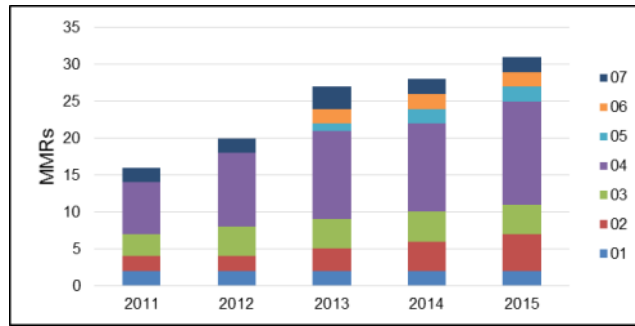


Fig. 7. PNR MMRs by division—2011-2015.

Achievement Program Report

Jack Hamilton, MMR

Throughout the Region, there continues to be a keen interest in the Achievement Program and the benefits that it brings to the individual participants. During calendar year 2015, members in the region earned 22 Golden Spike Awards and 31 Merit Awards. In addition, the following members earned the Achievement Certificates as noted.

Ted Alexis—Association Volunteer

Ross Ames—Master Builder – Motive Power, Structures, Scenery

Mark Dance—Master Builder – Structures, Scenery; Model Railroad Engineer – Electrical; Model Railroad Author

Andy Doll—Master Builder – Cars

David Faussett—Association Volunteer

J. Kyle Gardiner—Master Builder – Structures

JJ Johnston—Master Builder – Structures, Scenery

Gary Jordan—Master Builder – Structures, Prototype Models

Jim Little—Master Builder – Cars

Wain Miller—Association Volunteer

Bob Parrish—Master Builder – Motive Power

Charles Ricketts—Master Builder – Cars

Steve Stark—Master Builder – Prototype Models

David Yadock—Association Volunteer

We were also honored to welcome two new Master Model Railroaders to the Region. Ross Ames and Chuck Ricketts both completed the requirements for MMR and were awarded that recognition in 2015.

Because the National Convention was held in Portland, PNR did not have a Regional Convention. That resulted in not having our annual contest which also provides a number of AP evaluation opportunities for PNR members. The 2016 convention in Salmon Arm will restore that avenue for evaluation.

Overall, the participation rate, as demonstrated by AP certificates awarded (21), was lower in 2015 than in previous years. While not indicative of a lack of interest, the numbers reflect some loss of opportunity. Our numbers over the past several years, showing a growing trend of participation were: 2011 (35), 2012 (18), 2013 (67), and 2014 (56). I believe that much of the slowdown was directly related to health issues with some of the more active Division AP Chairs and their assistants. Most of us seem to be doing better, so I expect a significant upswing in 2016. While we will continue to seek out potential participants, it works much better if any interested members simply contact their Division AP Chair to get the process started.

For those members not currently active in the AP, please consider using this primary benefit of membership and get engaged. Try it! You may just find that you will enjoy the program.

Planning a trip this year?

Consider attending another region's convention. Check the dates/locations and get details on the NMRA Regional Conventions webpage at:

<http://www.nmra.org/region-conventions>

Division Reports

1st Division

Rich Pitter, Superintendent

First Division applauds the tremendous efforts of 2nd Division and its co-hosts of the NMRA National Convention, the [Portland Daylight Express 2015](#). The convention was a wonderful opportunity for local model railroaders to enjoy new ideas, new technology, and new friendships.

From May to December, 2015, our Division experienced a 12% growth in membership. Two factors especially contributed. Some new members joined to attend PDX 2015, and others joined because our members talked to them about their model railroading interests and aspirations. This is a great opportunity for us to invite new members to become active in our Division.

Our 2015–17 elected officers are:

Rich Pitter, Superintendent and Editor
Christopher Jones, Director and Assistant Superintendent
Nick Lehrbach, Director and Chief Clerk
Dirk Kruysman, Director and Paymaster
Glenn Edmison, Director and AP Chair
Gene Neville, Director
Bruce McGarvey, Director

Our other Division leaders are Ed Schaenzer, A/V Chair, and Charlie Hutto, Webmaster.

In May, we held our spring mini-meet at the Coos County Fairgrounds in Myrtle Point. Several members maintain and operate a permanent model railroad layout at the fairgrounds, which attracts many fair-goers and gives them an opportunity to experience model railroading with DCC controls. The layout also serves as an NMRA recruiting opportunity. The clinics at the mini-meet included:

- a history of transportation, including railroads, in Coos County, by Jerry Slattery;
- the process of manufacturing products by Coastman Trees, by Roger Rasmussen;
- a home-made layout sound controller, by Marvin Selzer;
- the Rogue Valley Model Railroad Club's layout development and operation, by Bruce Kelly;
- the use of perspective and color on backdrops, by Jim Davenport;
- a review of the division's Achievement Program activities, by Glenn Edmison; and
- a demonstration of how to paint backdrop clouds, by Bruce McGarvey.

In October, we held our fall mini-meet at the Gainsborough clubhouse in Eugene. We had presentations by "Mac" MacKinnon on the Umpqua Valley Model Railroad Club's Free-mo standards (which permit the modules to join together rapidly for a public showing), and by Ed Schaenzer on his O scale sawmill and On30 work train, both of which won first-place prizes at PDX 2015. Jim Crueger also had a clinic on how to build paper structures and containers.

2nd Division

Charlie Comstock, Superintendent

Not much to report this quarter other than the Division is working on the 2018 Regional Convention in Portland.

3rd Division

Tom Waters, Superintendent

Fall was ushered in with our fall Meet in September. As with almost every month, we have an event on the fourth Saturday and business meetings on the second Tuesday. Business meetings are held at a local pizza restaurant and we consistently have around 20 members attend. Mini-meets, held during most months, are not an official NMRA function but one where anyone interested is invited. After lunch and discussion of current events, a couple of layouts are visited. We hope this works as an introduction to our Division and to new members.

The last business meeting for the year is held during November and an annual Christmas party is held on the second Tuesday in December.

New events are being planned for the spring. By the time you read this, we will have participated in a model train display in January where the public could operate our John Allen switching puzzle.

4th Division

Russ Segner, Superintendent

We had a very successful 2015. There were some changes in our Board of Directors—Kurt Laidlaw assumed the office of Assistant Superintendent, Bill Messecar is our new Secretary, and Paul Pelligrino joined the Board as a Director.

January 16–18 was our Annual Train Show at the Pacific Science Center. A new clinic was established in Mt. Vernon. These clinics remain very strong and are well attended. In addition, our modular clubs have continued to flourish. They include Hi-Railers, N-Trak, Omni-Rail, and the HO Modulares. Each attended over eight shows last year. Nine clubs are in our Division and our membership is steady, currently holding at 542.

Our Spring Meet is scheduled for May 14; details will be available in the *Grab Iron* digital newsletter shortly. Speaking of the *Grab Iron*, it has an entirely new format and can be accessed on a variety of mobile devices. Try it at 4dpnr.com.

We look forward to seeing you this June at the PNR Convention, Selkirk Express 2016.

5th Division

Gary Thurow, Superintendent

The 2015–2016 year has started off very well. Division membership has stayed steady at around 205 to 210. This is in part due to an ongoing recruitment effort by Division officers and volunteers attending train shows and swap meets throughout the Division. The two meets attended in September and October—the Missoula Model Railroad Club Swap Meet & Show and the Fall Spokane Train Show—netted a couple new members and also a couple of renewals.

In December, the Division was notified of the resignation of Assistant Superintendent Doug Howard. So, the Division is once again looking for a replacement for this much-needed position. If you are interested, or if you know of a member who would like to take on this position, please contact the Superintendent at gathurow@cet.com to be appointed to fill out the Assistant Superintendent's term. The election for this position is slated for the General Business Meeting in April. See below for time, date, and location of this meeting.

Looking ahead to the second quarter, there are a couple of items to note. The 2017 PNR convention committee will be holding monthly planning meetings starting in January and running through May. One opening on the committee needs to be filled—the Co-Chair position. This person will assist the Chair to ensure all elements of the convention requirement are fulfilled. This is a key position. For those members who do not know about the Convention, it will be held in Spokane, Washington, June 7–10, 2017. The Red Lion Hotel at the Park has been contacted to provide hotel rooms and other facilities. Room rates will be \$99 per night for both single and double queen-size rooms. More details about the convention will be presented at the PNR Board of Directors meeting in Salmon Arm, British Columbia, in June of this year.

The event calendar for the 5th Division is as follows. On Sunday March 6, the River City Modelers will hold their annual spring train show and swap meet at the Spokane County Fair and Expo Center. I am told they will also be hosting a two-day Free-mo meet. The club will also be holding an open house on Saturday March 5 from 4 to 8 p.m., and again on Sunday March 6 from noon to 4 p.m. The next event is the Lewis-Clark Train Show and Swap Meet to be held Sunday April 3 at the Nez Perce County Fairgrounds in Lewiston, Idaho. The Annual Business Meeting for the 5th Division is next to be held Saturday April 16 from 8 a.m. to 2 p.m. The meeting location is the Cascade Mobile Home Community, 2311 W. 16th Ave, Spokane, Washington, and will be held in the club house. Registration cost will be \$10 to cover the cost for food and beverages. The last event will be the Helena Train Show and Swap Meet. on Sunday, April 24. Please support these events by attending one or more near you.

6th Division

Ed Molenkamp, Superintendent

First of all, I would like to congratulate Greg Kujawa for taking on the position of editor. I am sure he will do a fine job. I am looking forward to receiving regular issues of *The Switchlist* again!

The 6th Division is moving along quite well as it continues to grow. With past conventions and shows as well as the RailPass, we have many good things going for our Division. Our presence travelling the Division and making the public aware of all these great things has really helped.

The upcoming "spring show circuit" kicks off with the All Aboard 2016 Model Train Show in Saskatoon February 20–

21, then the Model Train Show in Moosejaw March 19–20, followed by Supertrain in Calgary April 16–17. For more information, be sure to check out the Timetable in this issue of *The Switchlist* or see “Upcoming Events” on the PNR website. I am also looking forward to attending the Regional Convention in Salmon Arm this June. At all these events stop by and check out the 6th Division information booth manned by assistant superintendent Peter Ulvestad and me. Hope to see many of you there.

Looking forward to the upcoming Division Meet, which will be combined with The Great Edmonton Train Show in September. We also know as a Division that we will be hosting the 2019 Regional Convention and some preliminary planning has already begun.

My next report in *The Switchlist* will include summer and fall events. Hope to see you all at the AGM in Salmon Arm. Safe travels!

7th Division

John Martin, Superintendent

Selkirk Express 2016

The 7th Division is honoured to be hosting the PNR Convention—Selkirk Express 2016—June 15–19, in Salmon Arm, British Columbia (more details are on p. 3 of *The Switchlist*). The organizing committee has planned a very appealing variety of clinics, prototype tours, and related activities under beautiful sunny skies. Please consider this a personal invitation to join us. You’ll enjoy it! Go to the web site at <http://www.selkirkexpress2016.ca/> to learn more about what’s planned and to register.

Train Shows

The 31st Annual Nanaimo Model Railroad Show will be held April 24 and the Victoria Model Railway Show is scheduled for May 29. More information can be found on the 7th Division website at <http://7divpnr.ca/events>.

Vancouver Train Expo 2015 (formerly known as “Trains”)

This was the first year in a much larger venue for the annual show, which had been staged at the same facility in Burnaby for over 30 years. Chairman Peter Mueller and his committee put on a well-attended and successful event in November at the Pacific National Exhibition Forum. The all-too-familiar shortage of volunteers has sparked considerable discussion about our annual Modeler’s Meet that has traditionally been a part of the train show. A special committee under Chairman Rene Gourley has been convened to consider all aspects of the relationship between the two events and we are looking forward to its recommendations. Please see Dick Sutcliffe’s more detailed report about the Vancouver Train Expo on p. 4 in this issue of *The Switchlist*.

Annual General Meeting Nov 2015

Russ Watson completed his very productive four years as Superintendent and 7th Division is very grateful for the many things he accomplished during his tenure. A well-qualified and motivated successor was all set to step into the position but a serious family issue prevented him from assuming the role. We now have a brand-new, totally inexperienced individual at the helm of our group but, with the help of far wiser heads, we shall motor on. Dan Rowsell of Victoria volunteered to be Assistant Superintendent and is a welcome addition to the executive.

Membership

The 7th Division is fortunate to have just over 300 members. Our executive is looking for ways to further increase the value of NMRA membership by creating opportunities for education and interaction through local clinics and gatherings—not an easy task given our geographic size. We’re in search of brilliant ideas and suggestions.

And finally.....

See you in June at the PNR Convention—Selkirk Express 2016. Why not register right now?

Have you changed your address or other membership information?

Notify NMRA Headquarters

email: nmrahq@aol.com

Phone: 423-892-2846 (8 a.m.–4 p.m. ET)

Mail: P.O. Box 1328, Soddy Daisy TN 37384-1328

Timetable

To add your events or activities to the Switchlist Timetable, PNR web page, and PNR Train Orders, contact the Timetable Editor, Mark Johnson at timetable@pnr.nmra.org

2016

Feb 20-21, Saskatoon, SK

All Aboard 2016, Western Development Museum. 2610 Lorne Ave. Saturday 9–5, Sunday 9–4:30. Layouts, Vendors, and Consignment Tables. Info: www.prairierailworkshop.com, allaboardtrainshow@gmail.com

Feb 27-28, Monroe, WA

United Northwest Model RR Club's 25th Annual Train Show and Marketplace. Evergreen State Fairgrounds. Saturday 10–5, Sunday 10–4. Layouts, vendors, clinics and entertainment. Benefitting Snohomish County 4-H Foundation. Info: www.unwclub.org/unwshow.html email: tables4unw.trainshow@gmail.com

Mar 5-6, Spokane, WA

Open Houses will be held at the River City Modelers Club, 1130 E. Sprague Ave., Spokane, WA ,on Saturday 4–8 p.m. and Sunday noon–5 p.m. The River City Western HO Scale Railroad is a 45'x45' double deck layout with over 19 scale miles of mainline track and several yards. The theme represents a modern bridge railroad with the mainlines, sidings, and yards representing terrain and industry from the Cascade Mountains through Central and Eastern Washington into the Idaho Panhandle. Stop by to see what has been done in the last few months. For information or questions, please call 509-535-3462 or via email at RCMinfonow@gmail.com. Friend us on Facebook to see pictures and keep updated on the progress of the River City Western HO Scale Railroad.

Mar 6 (Sun), Spokane, WA

Spokane Train Show, Sponsored by the River City Modelers. Spokane County Fair & Expo Center, Ag B, C and D Buildings, 404 N. Havana St. 9:30 a.m.–3:30 p.m. \$6 Admission, 12 and under Free. Over 100 vendors will have over 200 tables of railroad art, artifacts, photos, videos, and all scales of model trains for sale, and several Railroad Historical Societies will be there with information. We will have at least five operating model layouts in various scales—N, HO, S, and G. Model RR clinics will be offered throughout the day. Operation Lifesaver will be there along with an interactive wooden train layout for kids to operate. For table rental or general information, contact: Shirley Sample, P.O. Box 3065, Spokane, WA 99220; call 509-991-2317 or email: shirley@busnws.com.

Mar 11-12, Calgary, AB

Calgary Prototype Modelers Meet. Fri: Make & Take session on weathering, Roger Walker, MMR (Pre-registration required). Sat: Show-and-Tell displays, and clinics including “Advancements in Kadee Couplers” with John Wrinch and “European CPR Passenger Cars” by Doug Phillips. Info: Dave Audley, 403-275-1869 or daudley@telusplanet.net

Mar 12 (Sat), Portland, OR

Mount Hood Model Engineers *Run Your Train Day* Open House, 5500 SE Belmont St. basement level; Noon–4 p.m. \$3 donation per person is requested to support operation of the layout. Bring your ailing HO scale engines and rolling stock in for a check-up. Info: www.mthoodmodelengineers.org

Mar 12 (Sat), Clackamas, OR

Willamette Model Railroad Club Swap Meet. 9:30 a.m.–3:00 p.m. at the Camp Withycombe Armory, 15300 SE Minuteman Way, Clackamas, OR 97015. Admission for the general public will be \$5 with children under 12 Free. Info: Keith Kieres 503-723-7323 or email wmrswapmeet@yahoo.com

Mar 13 (Sun), Calgary, AB

CMRS Spring Mini Meet. Glenmore Inn. 10:45–3:30; \$5 for non-members. Clinics - Displays - Vendors Info: www.calgarymodelrailway.ca/mini-meets.html, Roger Walker (403) 208-0210 or email: walkerrg@telus.net

Mar 13 (Sun), Calgary, AB

CMT Annual Flea Market 2015. 8:30–10:30 a.m. Glenmore Inn, corner of Glenmore Trail and Ogden Road. \$20 for standard 2'x8' size table. Info: bharrow@nucleus.com or call 403-201-4937.

Mar 19-20, Moose Jaw, SK

Model Train Show. Sponsored by the Thunder Creek Model Railroad Club. Western Development Museum, 50 Diefenbaker Drive. The museum is opened 9 a.m.–5 p.m. Info: stirling.millar@live.ca, www.wdm.ca or 306-693-5989

Mar 19 (Sat), Burien, WA

Northwest Santa Fe Mini-Meet. Sat., March 19, 2016, 10 a.m.–5 p.m. (doors open at 9 a.m.). We are moving to a new location this time—the meeting room of the Boeing Employees Model Railroad Club, adjacent to their new double-deck layout under construction, at 425 SW 153rd St, Burien, WA. Info: John Thompson, jthomp1945@aol.com

Mar 19 (Sat), Edmonton, AB

MMRF Spring Swap Meet: Central Lion's Senior Citizens Recreation Centre, 11113 113 St. 9–noon. Admission \$3, Tables \$25, sold first-come, first-served. Info: Ric Francoeur, Ph. 780-458-1932 www.mmrf.ab.ca

Mar 19 (Sat), Corvallis, OR

Winterail Railroad Photography Exposition & Railroadiana Show. 1400 NW Buchanan Ave. Info: www.winterail.com

Mar 20 (Sun), Burnaby, BC

Western Rails 2016. Displays and models of all kinds. Operating model layouts, collectables, photos, timetables, keys, locks, lanterns, buttons, china, telegraph equipment, and much much more. Cameron Recreation Complex, 9523 Cameron St. (behind Lougheed Town Centre) 9 a.m.–4 p.m. Admittance: (cash only): Senior (60+) and Youth (6–15) \$3, Adult (16–59) \$6, Child (under 6) Free, Family \$15 (Maximum 2 Adults, 3 Youth). Info: westernrails@wcra.org 604-484-2791.

Apr 2-3, Parkland, WA

April Fun Fest presented by Tacoma Northwestern Model Railroad Club. Model Train Layouts at Olson Auditorium, Pacific Lutheran University. (Parking for Olson Auditorium is available in the lot adjacent to building 40 - labeled RFV). Vendors selling train-related items will also be available both Saturday and Sunday. Hours: 9–4 Saturday April 2; 10–3 Sunday April 3. Entry: 18 years and up - \$7; Seniors, Military, and Kids under 12 years old - \$5; Kids under 3 and Scouts in uniform - Free; Admission is good for both days! Info: tnwmrr@gmail.com or www.tacomnorthwestern.org/show.htm

Apr 3 (Sun), Lewiston, ID

Fifth annual Lewis-Clark Train Club & Collectables Swap Meet, 9:30 a.m.–4:00 p.m. Nez Perce County Fairgrounds, 1229 Burell Ave. Admission \$5; children under 12 Free with an adult. There will be vendors from around the Northwest with displays, railroad collectables, and layouts. Operation Lifesaver will have the train simulator trailer on display for viewing. Info: Dan Wise, wrails@cableone.net, 208-816-0845 (cell) or Mike McGee, 208-816-6072; www.lewis-clarktrainclub.com

Apr 9 (Sat), Beaverton, OR

Pacific Northwest Area 15th Annual Meet-'N'-March.. Valley Catholic High School, 4275 SW 148th Ave. 10 a.m.–4 p.m. \$5 Adult, \$4 Child 6–12, Under 6 Free. Swap meet, Intermediate & Advanced Clinics, Raffle and Door Prizes. Info: www.meetnmarch.org

Apr 16-17, Calgary, AB

SUPERTRAIN 2016. Canada's Biggest and Best Annual Model Train Show is moving to a new venue. 9 a.m.–5 p.m. both days. Genesis Centre, 7555 Falconridge Blvd. NE, Calgary. Free paved parking or take the C-Train to Saddletowne Station. Adult - \$10, Youth (6–12) - \$5, under 6 - Free. Over 70,000 sq. ft. of operating layouts, exhibits and displays, railroad artists, hobby shops, model manufacturers, demonstrations, clinics, museums, and railroad historical associations, Lego and Thomas Play Area, garden railways, ride-on trains, and much more. Info: www.supertrain.ca or email to info@supertrain.ca

Apr 23 (Sat), Eugene, OR

PNR 1st Division spring mini-meet at 2555 Lansdown Rd in Eugene. Gates open at 9 a.m.. The program begins at 10 a.m. Model contest, presentations, and clinics. Info: pnr.nmra.org/1div/

Apr 24 (Sun), Helena, MT

Annual Helena Railroad Fair, 9:30 a.m.–4:00 p.m. Helena Civic Center. Info:- 406-443-1578 or 406-227-0158, email: rrfair@mt.net

Apr 24 (Sun), Nanaimo, BC

32nd Annual Vancouver Island Spring Model Railroad Show. Beban Park Rec Center, 2300 Bowen Rd. Open 10:00 a.m.–4:00 p.m. Sales and Swap tables, Model Contest and Operating Layouts. Info: Ken Rutherford (250) 724-4698 email kj.rutherford@shaw.ca

Apr 30 (Sat), Olympia, WA

14th Annual Olympia Layout Tour. More details to follow. Info: Scott Buckley, sbuckley54@comcast.net

May 29 (Sun), Victoria, BC

Victoria Model Railway Show, West Shore Curling Rink at Juan de Fuca Recreation Centre, 1767 Island Highway, Colwood, BC, 10 a.m. - 4 p.m. Adults \$7, Youth (11–16) \$3, Family \$14, Children (8 and under) Free with an adult. Operating layouts, vendors, displays, door prizes and more. Info: Ted Alexis (250) 595-4070

Jun 15-19, Salmon Arm, BC

PNR Regional Convention—Selkirk Express 2016. There will be bus trips to the Kettle Valley Steam Railway and to the Revelstoke Railway Museum. Layout tours, clinics, contests, a public show, and Free-mo meet. Info: www.SelkirkExpress2016.ca

Remember to register for the PNR Convention—Selkirk Express 2016

**June 15–19, 2016
Salmon Arm, British Columbia**

Online registration available at: <http://www.selkirkexpress2016.ca/>

Pacific Northwest Region Staff

Officers

President: Shirley Sample, 509-292-8332, PNRPREZ@nmra.org
Vice-President: Don Locke, 503-967-6382, dmmlocke@aol.com
Secretary: Robert Stafford, 360-722-1170, ErieLack1@yahoo.com
Treasurer: Dirk Kruysman, 541-673-6341, dutchdirk@charter.net
Asst. Treasurer (Canada): Larry Sebelley, 604-858-5717, sebelley@shaw.ca

Asst. Treasurer (US): Nick Lehrbach, 541-672-1453, lehrbach@rosenet.net
Office Manager: Ed Liesse, 253-529-7405, EEliesse@aol.com
NMRA Western Director: Jack Hamilton MMR, 360-308-9845, gradiver@wavecable.com
Immediate Past President: Walt Huston, 253-535-2043, walthuston@earthlink.net

Committee Chairs

Achievement: Jack Hamilton MMR, 360-308-9845, gradiver@wavecable.com
Ballot, USA: *Position vacant; please volunteer*
Ballot, Canada: Richard Sutcliffe, 604-467-4301, ras1@uniserve.com
Contest: John DeSteele, 590-783-4665, greenriverrail@safe-mail.net
Convention: Larry Sebelley, 604-858-5717, sebelley@shaw.ca
Education: *Position vacant; please volunteer*
Member Aid: Bruce McCosh, 208-386-9629, bmccosh@cableone.net

Membership: *Position vacant; please volunteer*
Nominations: *Position vacant; please volunteer*
President's Award: Dave Liesse, 253-343-3445, nmradave@liessefamily.net
PNR Registered Agent: Dirk Kruysman, 541-673-6341, dutchdirk@charter.net
Switchlist Editor: Greg Kujawa, 703-772-0207, switchlist@pnr.nmra.org
Webmaster: Mark Johnson, 780-436-2480, webmaster@pnr.nmra.org

Division Superintendents

1st Division: Rich Pitter, 541-636-3833, richpitter@aol.com
2nd Division: Charlie Comstock, 503-628-6323, trains@upwardaccess.com
3rd Division: Tom Waters, 208-375-4796, twaters8@msn.com
4th Division: Russ Segner, 425-228-7327, russseg@gmail.com

5th Division: Gary Thurow, 509-838-7174, gathurow@cet.com
6th Division: Ed Molenkamp, 780-455-1479, 6divsuper@pnr.nmra.org
7th Division: John Martin, 604-594-9719, jamartin@jdmartin.ca

**Not getting the bi-monthly NMRA eBulletin or Train Orders?
The NMRA eBulletin comes out every other month**

Email: nmrahq@aol.com

Phone: 423-892-2846 (8 a.m.–4 p.m. ET)

Mail: P.O. Box 1328, Soddy Daisy TN 37384-1328

National Model Railroad Association
Pacific Northwest Region
104 S. 296th Place
Federal Way, WA 98003-3626

Non-Profit Org
US Postage
PAID
Tacoma, WA
Permit No. 462



Pacific Northwest Region National Model Railroad Association

- Division 1:* Southwestern Oregon
- Division 2:* Northern Oregon, Southern Washington
- Division 3:* Southern Idaho, Eastern Oregon, Southwestern Montana
- Division 4:* Western Washington, Alaska
- Division 5:* Eastern Washington, Northern Idaho, Montana
- Division 6:* Alberta, Saskatchewan, Northwest Territories, Nunavut
- Division 7:* British Columbia, Yukon

