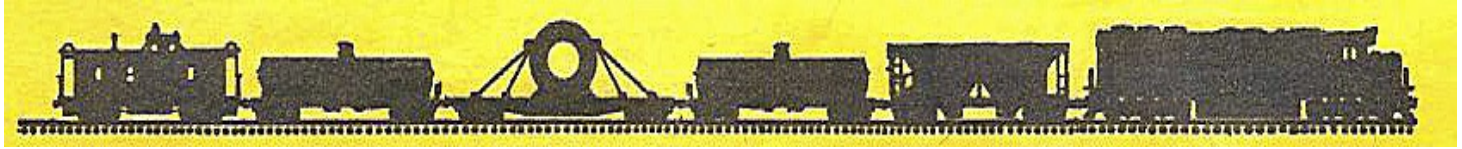


The Brakeman's Rag

Division 1, Pacific Northwest Region, NMRA

September 1, 2011



Contact Editor at E-mail gedmison@aol.com

Next Division 1 Mini-meet October 8, 2011 Eugene, Oregon. This will be held at the ***Emerald People's Utility District Corporate Headquarters, 33733 Seavey Loop Road (near 30th Avenue Exit to Lane Community College)***. Sponsored by the Willamette Cascade Model Railroad Club. Doors open at 8 AM for coffee and donuts, Meeting begins at 9 AM. We will have a full slate of clinics, model railroads to tour, and there will be NMRA judging for NMRA merit awards and the Achievement Program for those that are interested. You must be an NMRA member to have models judged in these sanctioned events. You DO NOT have to be an NMRA member to enter a model or to vote in the ***Most Popular Model Contest***. In either contest you can bring buildings, dioramas, freight cars, engines, etc. so bring something that you can enter.

The Willamette Cascade Model Railroad Club was your host almost two years ago and we are looking forward to you coming to Eugene to spend a full day involved in model railroad activities provided by various members of our club as well as other invited guests as clinicians.

Lunch will be provided on site by ***Temple's Trains & Things*** and we hope you will mark your calendar for this event. We usually have people from as far north as Albany, as far south as Medford, as well as people from the Oregon Coast representing various parts of the 1st Division of the Pacific Northwest Region of the National Model Railroad Association.

Plan now, to be there, and bring a friend or potential member. Hope you will be ***SEEN IN EUGENE***.
More info: Lee Temple (503)393-2424.

Superintendent's Report

By the time you read this Division 1 will not have a Superintendent elected by the general membership, but rather by the members of the board since no one ran for the position of Superintendent. The new BOD will elect one of its own members to be the acting Superintendent. Check the Division 1 by-laws at our web-site to see the procedure.

The persons elected to the new BOD are as follows:

Bill Howell

Dirk Kryzman

Nick Lehrbach

Gene Neville

James Dougall

Glenn Edmison

Congratulations and thank you for running for office and volunteering to serve our division for the next two years. The [new board's] term of office begins on September 1, 2011.

Thank you all for giving me the opportunity to serve as your Superintendent for the past four and a half years. My only regret is that out of the nearly one hundred members of the First Division, not even one person stepped forward and ran for the office of superintendent for the next two years. Also thanks to the thirty – three members who took the time to fill out and return their ballots. Also thanks to Christopher Jones and Marvin Selzer who tallied the votes.

Two Division 1 members, **Bruce McGarvey** and **Dirk Kruysman**, have been hard at work on the PNR/PCR joint convention to be held in Medford, Oregon next spring. Bruce has been organizing the local events in the Medford area and Dirk has been keeping track of the funds as the convention treasurer.

The NMRA Board of Directors selected Portland, Oregon as the site of the 2015 National Convention. Details and exact timing of the convention will be announced in the coming months.

Respectfully,

Edward Schaenzer, MMR

Summer Club Reports

Corvallis Society of Model Engineers (Gene Neville)

Yes, CSME is going to rebuild our layout. This was decided by the membership last winter.

Several factors came into play that convinced the majority that a major renovation was necessary. The design was from the 70s with short passing sidings, many long tunnels, and just an out and back style with little opportunity for realistic operations. There was only 1 yard, at the end of the mainline for any industrial switching.

Additionally, the layout being over 30 years old in some areas was becoming a maintenance nightmare. Also, there are some building code violations, such as blocking the main electrical panel, that we felt should be addressed.

The time line is to operate the existing layout until after the fall Open House. Tear down to the bare walls will commence soon after the last Open House session. In the meantime a design committee was formed that came up with a basic footprint that was subsequently approved by the membership. Another committee has taken these plans and determined basic L-girder and stringer needs. The goal is to have all the benchwork, mainline and passing sidings completed by the 2012 Open House. We are currently in the process of drawing the layout full size and procuring the necessary materials for the benchwork. All the benchwork will be made from 3/4 inch plywood, and we will shortly begin precutting the necessary pieces.

We will continue to use our Digitrax DCC system on the new layout.

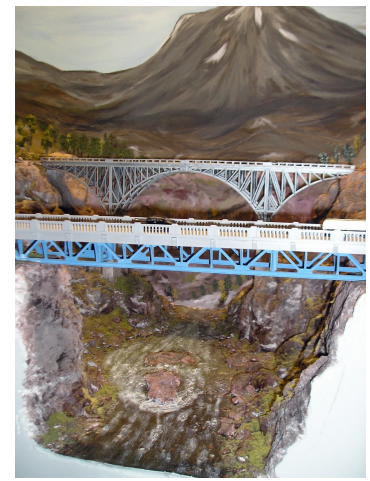
Ochoco Valley Railroad of Prineville (Various sources)

This small but determined group has continued to make significant progress on their layout at the Crook County Fairgrounds. As per their agreement with the fair board, they were open to the public during the entire fair time, with a constant flow of visitors. Shown below are three of the featured structures on the layout which includes The Prineville City Railroad and the mainline BNSF north and south of Redmond, OR. . Effort during the next year will be to complete at least one of the cities on the layout. At present, each community contains an accurately modeled railway station replicated from historic photos, and industrial structures.

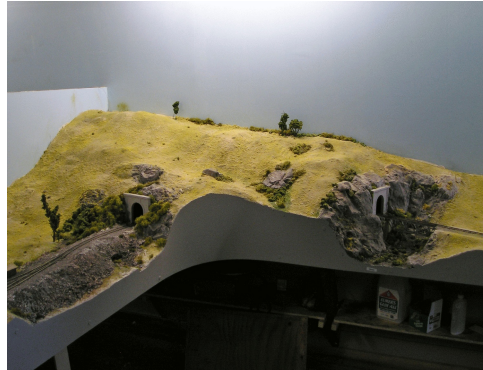
The high trestle at Madras



The Crooked River Bridges

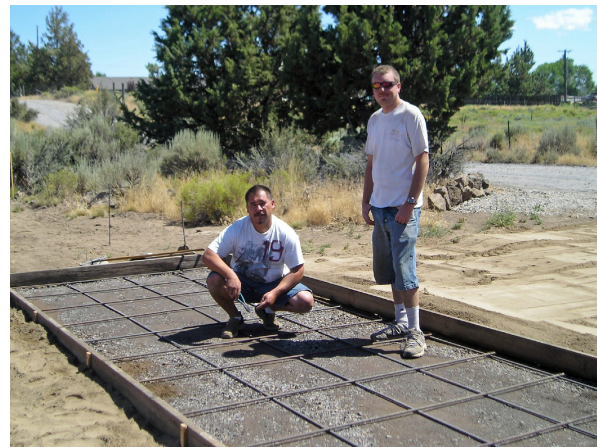


Tunnels in the desert



Eastern Cascades Model Railroad Club at Bend (Roving reporter)

This long active club is multi-faceted. The approximately 30" X 50" clubhouse contains almost 2000 lineal feet of HO gauge layout. A division of the club is building the out of doors 7-1/2" gauge layout which is making rapid progress toward a total trackage of 1-1/4 miles. The roving reporter found **Conrad Firkus** and **Warren Root** busy on a recent weekend building an automobile access crossing over the new section of track. The ECMRRC has scheduled their 2011 open house on both ***Saturday and Sunday, October 8 and 9***. The open house is free and rides on the outdoor layout are very popular. You really would enjoy any time you could spend there.



WCMRRC Reappears At The Lane Co. Fair In 2011

by Lee Temple

From August 17-21, 2011 the Willamette Cascade Model Railroad Club had a 22 ft. long by 16 ft. wide layout on display in the Performance Hall on the Lane Events Center Campus located off of 13th avenue in Eugene.

We last made an appearance with a display approximately 8-10 years ago when we had a layout set up in the ice arena. From the beginning of our club in 1970 to the present time we have had had our layout set up approximately 4-6 different times.

With the help of the Lane Events Center Staff we were able to return this year and the members who participated and the general consensus among the membership is that we would like to see this become an annual event we do each year.

With the building we were housed in the doors were open from 11 a.m. to 9 p.m. We had 100 time slots to fill. Members participating this year were Fred Miranda, Roger Fegles, Gary Schwieger, Lee Temple, Charlie Lange, Martin Tighe, Tanner Hermanson, Ryan Henry, Rhodoc Erickson, Gil Hulin, Dave Kleger, Bob Kern, Jayden, Bill Lee, Jill McKenney, Stewart and Walt Mulford, Noah Russell, Diane Temple, and Sam and Rune Larsen.

Unlike most shows we do which run in length from 2-3 days in a row this show was a total of 5 days of running, and one day for set up. The biggest thing that many of us noticed was the chance to “relax and enjoy” our layout and the conversations and laughter that was numerous over the 6 day run. We have a good time at all of our shows, but it seemed to be even more pronounced and noticeable among the members as several made these same observations. Too, we got to know some of our newer members who had recently joined our club.

One of the highlights for me was that we had Ryan Henry return to the club as an adult member when he was a junior member approximately 10 years ago. Now that he is done with his schooling, is going to be married in the next year, and he has full time employment, he decided to return to our club in addition to his own layout that he has built at home. Welcome back Ryan.

Special thanks to Fred for designing the layout, for Roger being the person in charge of the layout and main trouble shooter for the entire show, and Elizabeth Henry, special events coordinator for the Lane Events Center. Without her support and advocacy on our behalf we would have never been able to reappear at the 2011 Lane County Fair. Thanks Elizabeth!

Rogue Valley Model Railroad Club (Bruce McGarvey)

Club members have been busy during the summer with the Sunday open houses at the Railroad Park. The hot weather slows down the afternoon attendance somewhat but many folks still visit for a “steam” train ride or to watch trains run. An occasional Saturday and/or Sunday (welcome to our Eugene modelers) operating session happens when enough members show up that are not also engaged in summer travels of their own. The Club is preparing for their trip to Klamath Falls to support the October 22-23 Annual Railroad Show & Sales Event at the Klamath County Fairgrounds. A modular layout and a Thomas the Train layout will travel to the show. The Thomas layout allows for “hands on” running of trains by kids of all ages and is a popular stop on Sunday public run days.

EXTRA 2011 WEST- *The Unconventional Convention*. Jim D. and Bruce M. had a good time at the NMRA convention in Sacramento. Lots of good clinics and tours, made new friends and had a super time at the National Train Show...135,000 square feet of layouts, displays and exhibits. WOW!! Many clinic handouts are available and downloadable online at the convention website: <http://www.x2011west.org/handouts.html> Check it out, you might find something of interest. Set aside some time in 2015 for the NMRA convention will be in Portland, Oregon.

Favorite Model Contest

Note: An error was made in reporting the results of the Favorite Model Contest for the Spring Mini-meet. Christopher Jones has kindly provided the correct results, as follows. The editor apologizes for the error.

The contest results were as follows:

Locomotive - Nick Lehrbach

Rolling Stock - Tie between Scott Rouse and Fred Smith

Structure - Dean Seehawer

Photograph - Fred Smith


Miscellaneous - Dean Seehawer

Overall Favorite - Tie between Dean Seehawer (miscellaneous) and Sid Jack (miscellaneous)

TEMPLE'S TRAINS & THINGS

BUY-SELL-CONSIGNMENTS
LEE & DIANE TEMPLE, OWNERS

eBay User ID: **temples-trains-and-things**
PO BOX 41267
EUGENE, OR 97404-0327



541-954-4917
541-225-7394
ttandt@ram-mail.com

Time Table

Sep 8-11 - SPH&TS 2011 Convention, Doubletree Hotel, Portland-Lloyd Center. <http://www.sphts.org/convention/>

September 9, 10 & 11, Treasure Valley Train Expo. O'Conner Field House, 2207 Blaine, Caldwell. Noon to 8:00 P.M. Friday, 10:00 AM to 8:00 PM Saturday and 10:00 AM to 6:00 P.M. Sunday. Admission \$5.00 Children 12 and under Free. The event will include modular layouts, model contests, vendors and clinics. Clubs are encouraged to participate. Vendor tables are available. For further information contact Troy Dewey, 208-461-5028 treasurevalleytrainexpo@gmail.com 1509 Caldwell Blvd. #19, Nampa, Id. 83651

Sep 24 - Division 1 Fall Meet. Covenant Presbyterian Church 4848 North Five Mile Road Boise, ID 83713 (McMillan and Five Mile).

Oct 8 - PNR/NMRA 1st Division Fall Mini-Meet, Eugene, Ore. Info: <http://pnr.nmra.org/1div/>

Oct 8-9 - Eastern Cascades Model RR and Central Oregon Live Steamers Open House, Bend, Ore. HO club and 1½ inch railroads on 5 forested acres. Info: <http://www.ecmrr.org/default.aspx> or 541-317-1545.

Oct 22-23 - 4th Annual Model Railroad Show & Sales Event, Klamath Rails Model RR Club, Klamath County Fairgrounds, Klamath Falls, Ore. Sat 9-5, Sun 9-4. Info: Steve Hart 541-892-2550, Joe Brick 541-883-3071.

Nov 13-14 - Roseville, CA. 34th Annual International Railfair, Placer County Fairground, Sat 10 AM to 5 PM. Sun 10 AM to 4 PM. Moe Info: www.internationalrailfair.com or Scott at scooter923@att.net.

Nov 26-27 - 34th Annual Rogue Valley Railroad Show, Medford Armory, 1701 S. Pacific Hwy, Medford, Ore. Info: Brad at 541-535-7952, Bruce 541-890-8145 or iwcr@charter.net

Feb 27-28, 2012 - World's Greatest Hobby Show, Portland Oregon, Oregon onvention Center 10 AM to 6 PM Sun 1 AM to 4 pm. Admission \$10 per person, not counting parking. More info: (630) 279-5094 or staff@wghsow.com

November is National Model Railroad Month.
What are you or your club doing to honor the occasion?

The PNR/PCR Joint Convention has a web site up and running at

<http://www.pcrnmra.org/conv2012/>

Division 1 Officers

Board Chairman -

Gene Neville (541) 745-5502
E-Mail geneneville@earthlink.net

Chief Clerk -

Nick Lehrbach (541) 672-1453
E-Mail: lehrbach@rosenet.net

Paymaster -

Dirk Kruysman (541) 673-6341
E-Mail: dutchdirk@charter.net

See Division 1 Web Page at: <http://pnr.nmra.org/1div/>

Newsletter Editor: **Glenn Edmison**

Division 1 Board of Directors

Bill Howell (541) 258-3272

E-Mail: pbnrr@centurytel.net

Nick Lehrbach (541) 672-1453

E-Mail: lehrbach@rosenet.net

Dirk Kruysman (541) 673-6341

E-Mail dutchdirk@charter.net

Gene Neville (541)745-5502

E-Mail: geneneville@earthlink.net

James Dugall (541) 779-8725

E-Mail: _____

Glenn Edmison (541) 617-1110

E-Mail: gedmison@aol.com



Baird Creek Bridge (Courtesy of *Timber Times Vol 49* August 2011 - Weyerhaeuser Archives, No. B07-0013-2)
At 1300 feet long and 235 tall, this was billed as one of the world's largest wood bridges. Located in the Kalama River Basin east of Longview, Washington.